

OAK GROVE STATION IMPROVEMENTS



Public Meeting November 25, 2019



**Massachusetts Bay
Transportation Authority**

Agenda

- Project Scope
- Goals and Benefits
- 2019 Paving Contract
- Improvements: New Elevators & Station Condition
- Construction Sequencing and Staging
- Project Schedule
- Past Comments
- Outreach Information



Station Project Scope

- Install **three** additional elevators to provide redundancy
- Replace **one** existing elevator
- Improve elevator **visibility** by use of glass enclosures
- Improve station **access** and repair sidewalks
- Implement station **brightening** (cleaning, painting, lighting, wayfinding)
- Upgrade station **compliance** with current codes



Goals and Benefits

- Improved station **accessibility**
 - Elevator reliability
 - Pedestrian circulation and wayfinding
- Improved **safety, reliability & customer experience**
- Increase **energy** efficiency
- Reduced **maintenance** costs
- **Code** compliant station



Site Benefits



- **Washington Street:** sidewalks, parking, pedestrian crossing
- **Banks Place:** resurfacing, sidewalks, parking, ped crossings
- **East Parking Lot:** resurfacing, restriping, sidewalks, drainage



2019 Paving Contract

1. Banks Place roadway improvements
2. MBTA Parking resurfacing
3. Sidewalk & curb cut upgrades
4. Catch basin clean-out
5. Banks/Winter pedestrian crossings
6. Anticipated completion at the End of 2019

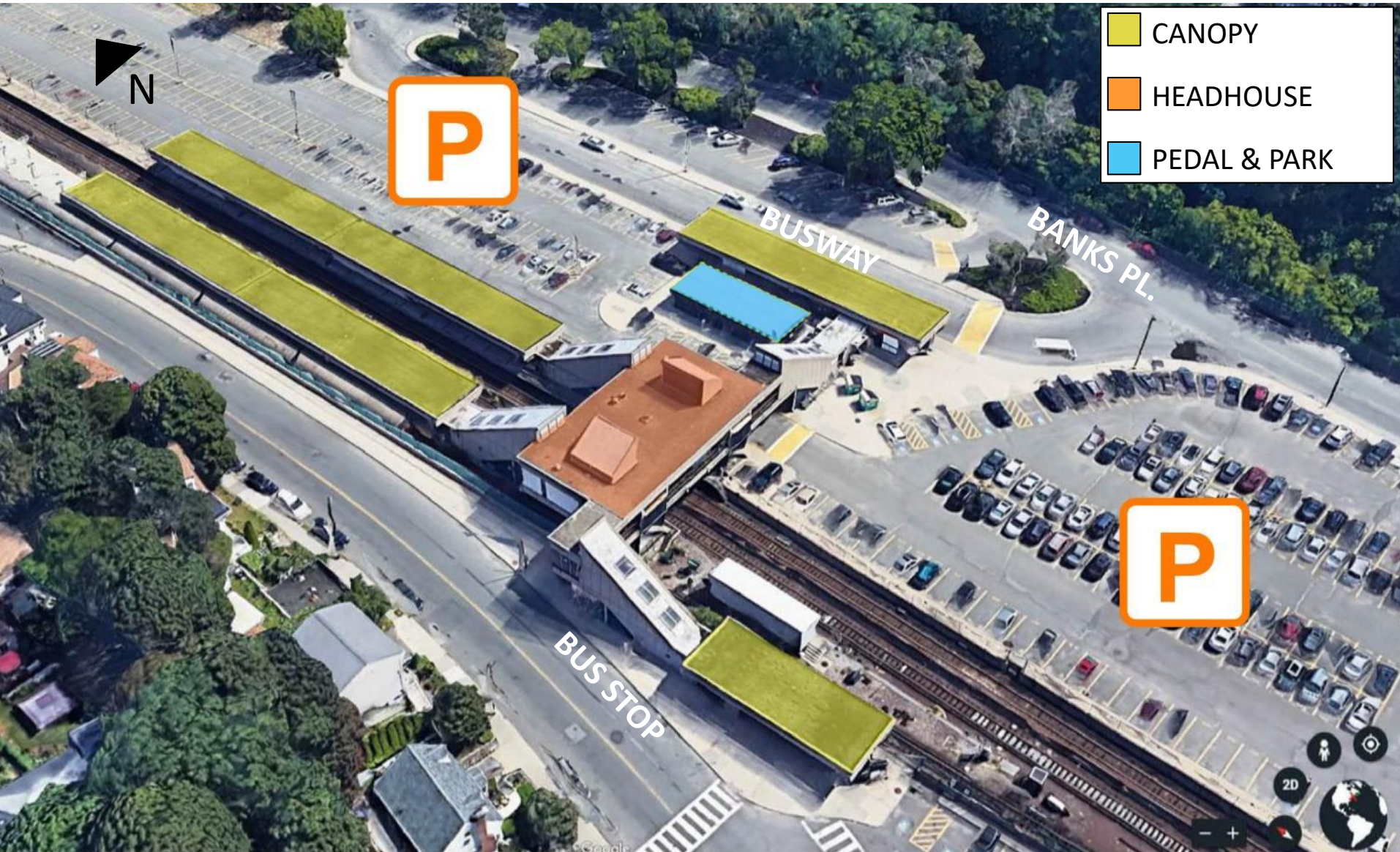


Banks Place Improvements

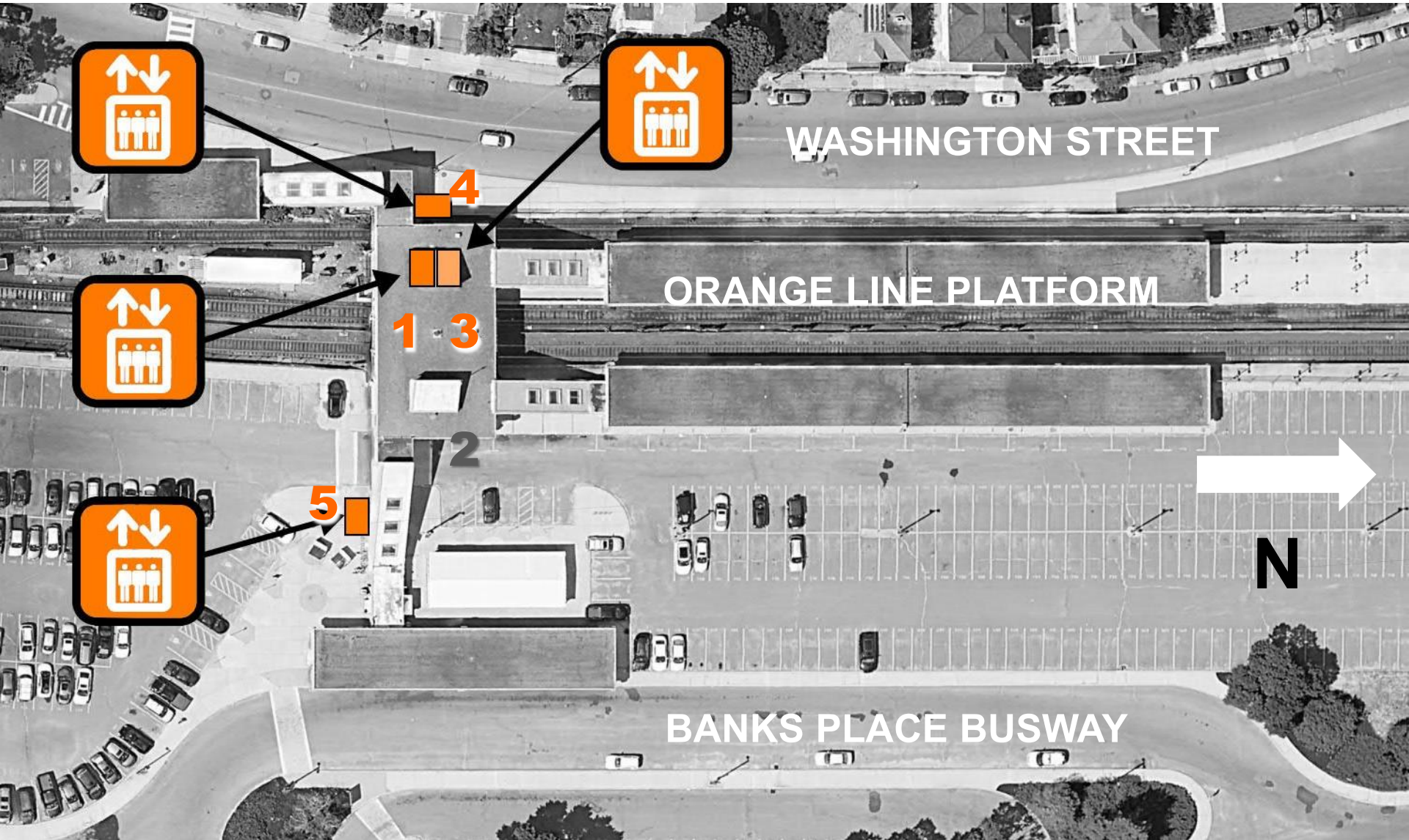
1. Banks Place roadway improvements
2. MBTA Parking resurfacing
3. Sidewalk & curb cut upgrades
4. Catch basin clean-out
5. Banks/Winter pedestrian crossings



Existing Conditions



Improvements – New Station Elevators



Improvements - Elevator 4 (Washington St. Entry)



Improvements - Elevator 5 (Busway Entry)



Improvements - Station Experience, Infrastructure

- **Cleaning** interior finishes and exterior concrete
- **Paint** public space surfaces and support rooms
- **Wayfinding** program station-wide
- Existing **glazing** replacement
- New **roofing** system
- New lobby and entrance **flooring**
- **Stair** tread replacement
- New energy efficient **lighting**
- New **electrical** substation and generator



Improvements - Washington Street

- 1) New Flashing Beacon at the main crossing
- 2) New Bus Shelter at Station Entrance
- 3) New Bicycle Racks across Station Entrance
- 4) New Parking Lot at the Winter/Washington area



Improvements - Flashing Beacon

- LED flashing warning lights
- Flashing visible in inclement weather
- Alerting all motorists (autos, buses, motorbikes)

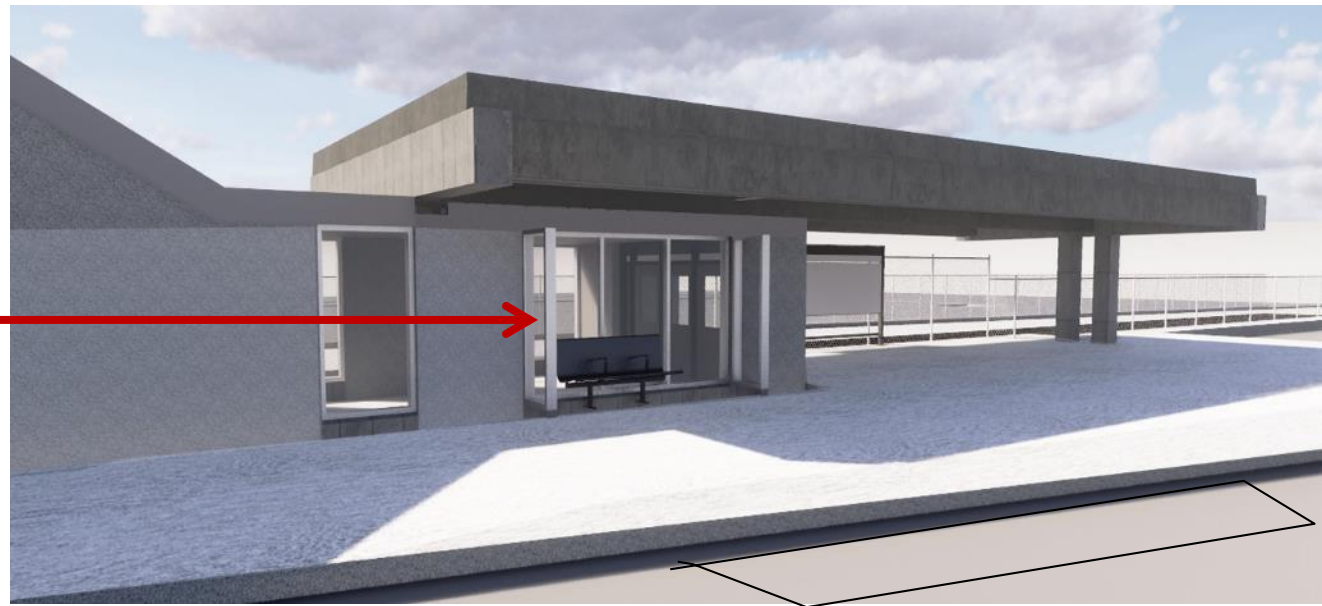


Improvements - Bus Shelter

Current Bus Stop



Proposed Shelter

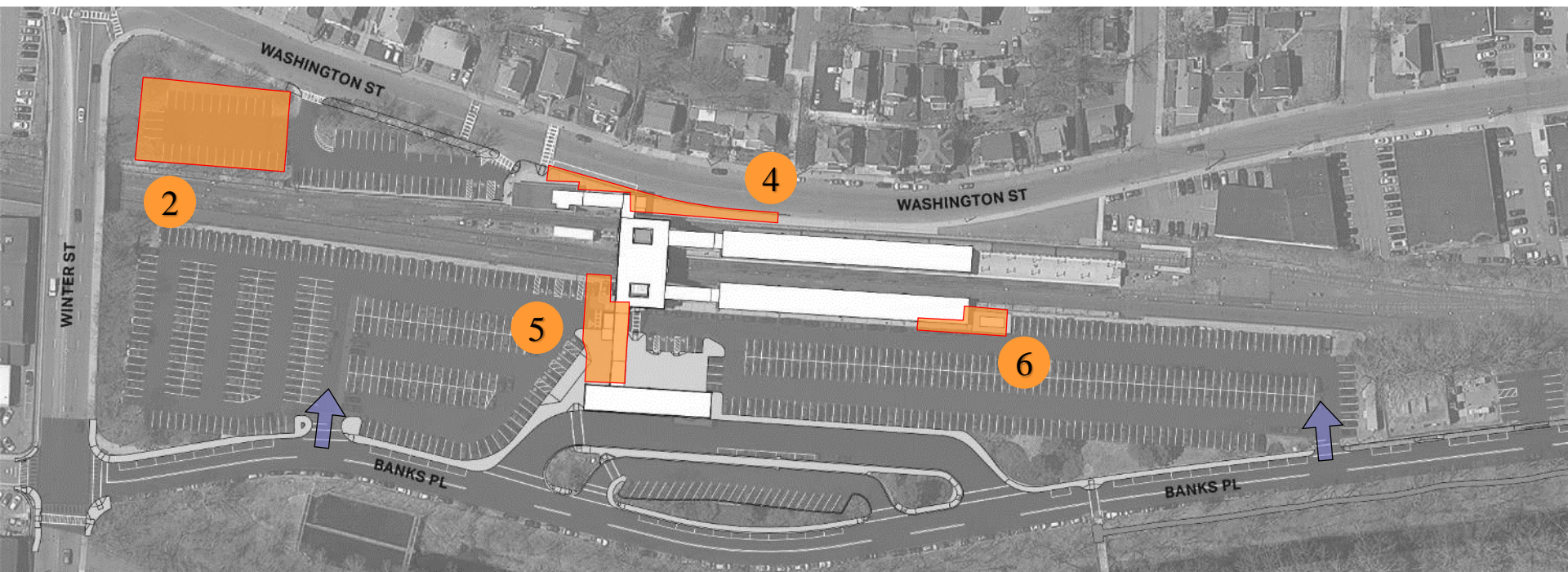


Construction Sequencing

- Most work during standard hours 7:00 AM–5:00 PM
- Maintain Operations for Orange Line, Bus and Rail
 - Station closures during a limited number of weekends
 - Inbound track outages, single track platform operations
- Parking / roadway improvements on Washington Street during off-peak hours
- Elevator Sequence:
 - Construct new elevators 3 & 4
 - Construct new elevator 5
 - Reconstruct elevator 1



Construction Staging Areas



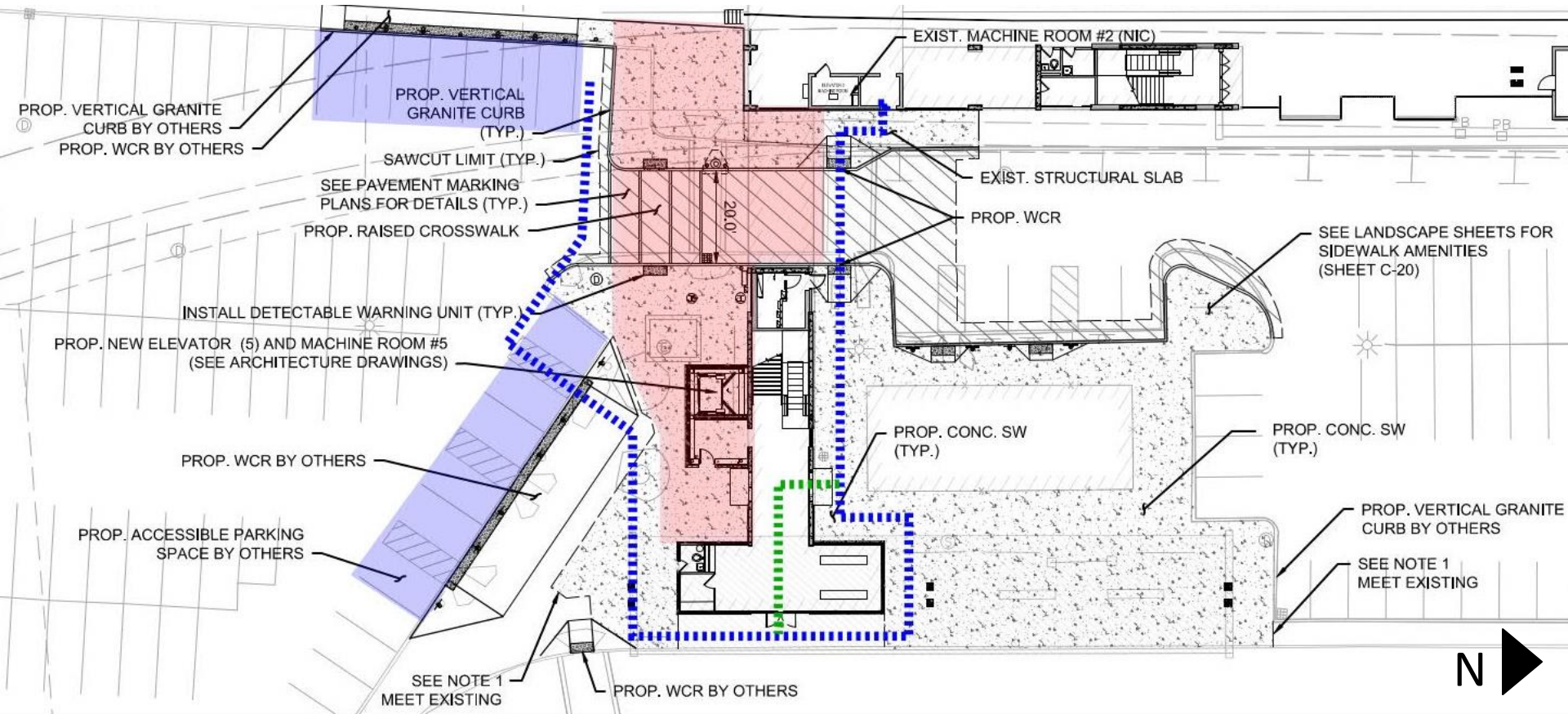
Area-2: **Site** southwest corner at Washington/Winter area

Area-4: **Sidewalk** along station wall

Area-5: **Sidewalk** around Busway Entrance and Overpass

Area-6: **Sidewalk** at north of Commuter Rail platform

Construction Staging Area 5

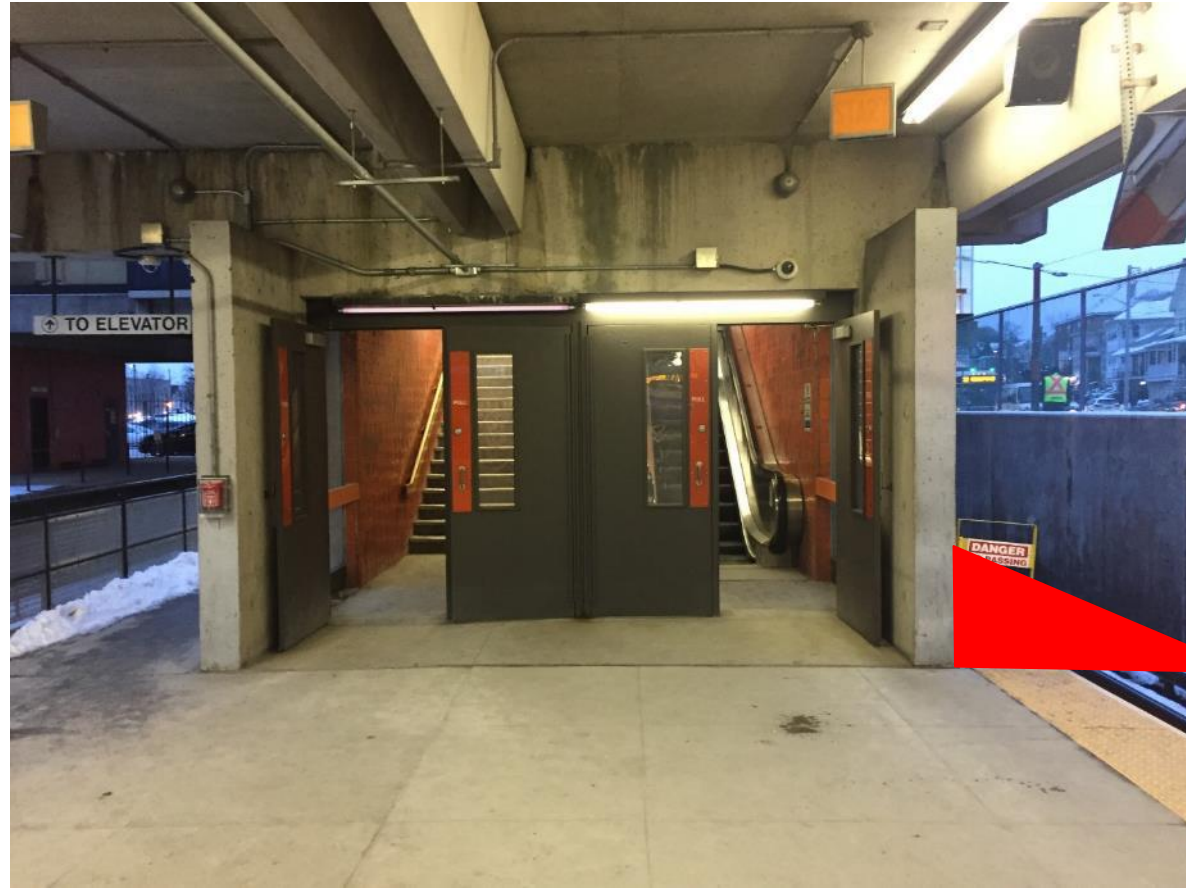


- Proposed work-zone
- Existing Accessible Parking
- Accessible Path of Travel to Elevator 2
- Alternate Path through Station Entrance

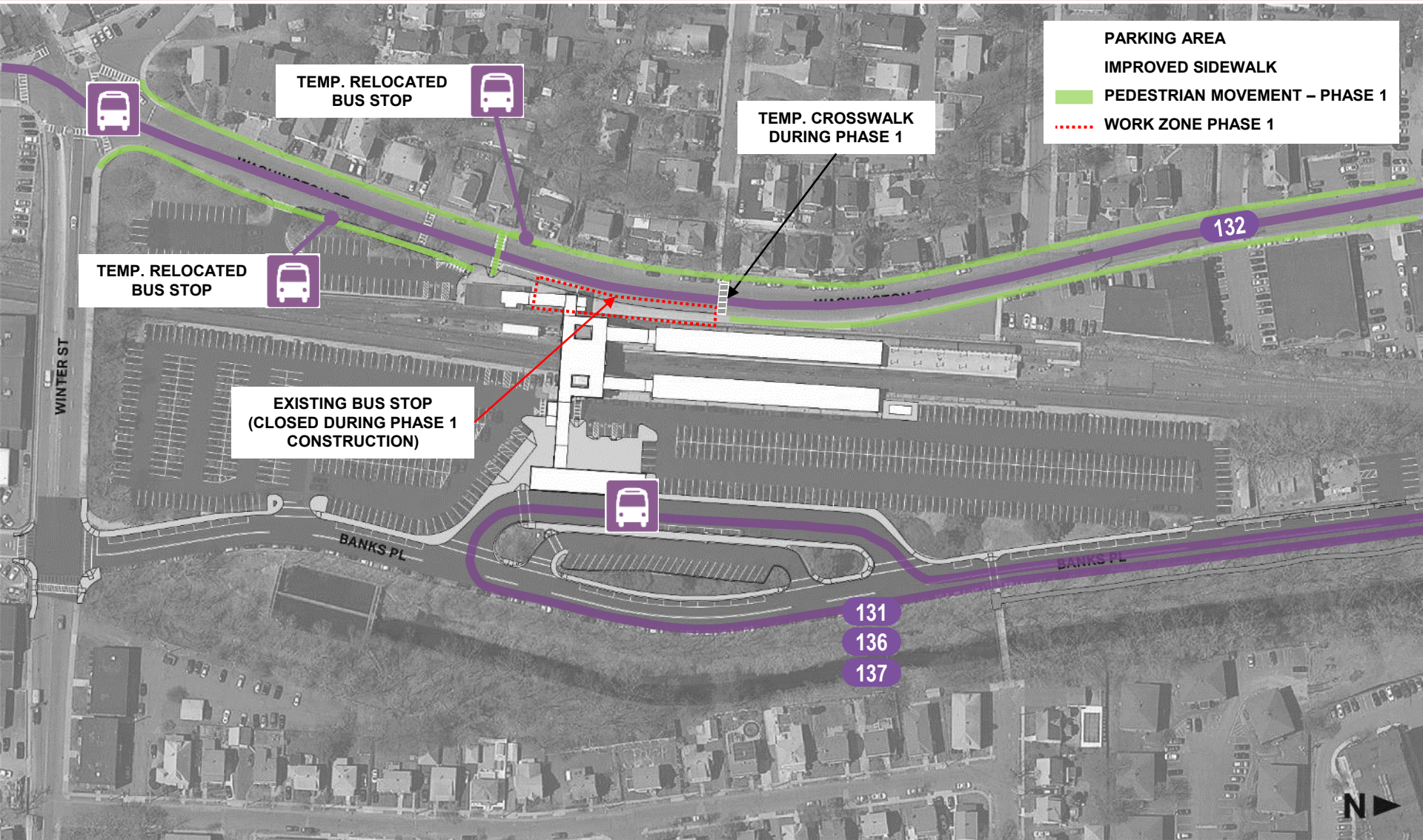


Elevator Sequencing - inbound track outages

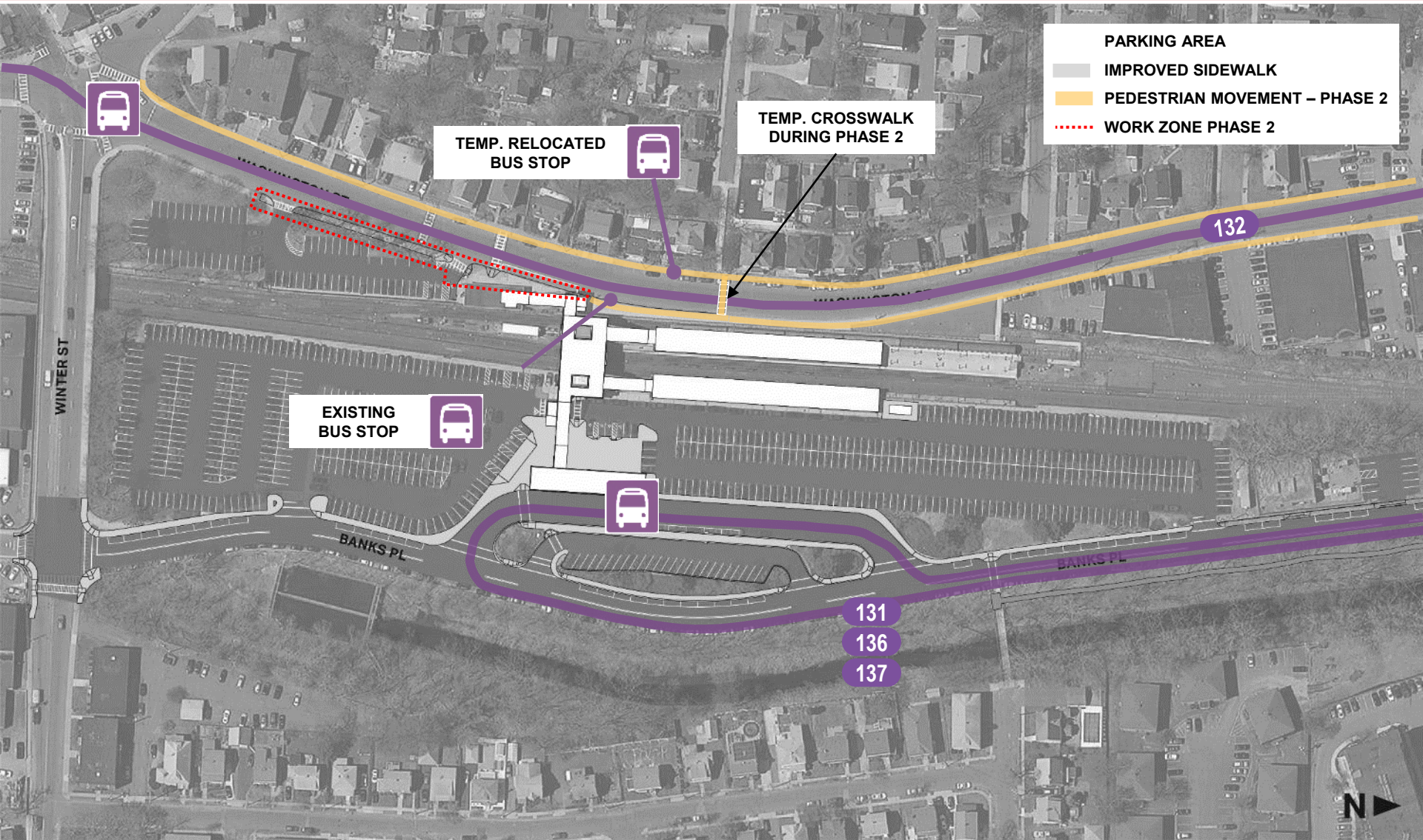
- Boarding on the east half of the center platform (commuter rail side)
- Contractor will use the track out-of-service (for construction)



Washington Sidewalk Sequencing - Phase 1



Washington Sidewalk Sequencing - Phase 2



- PARKING AREA
- IMPROVED SIDEWALK
- PEDESTRIAN MOVEMENT - PHASE 2
- WORK ZONE PHASE 2

TEMP. RELOCATED BUS STOP

TEMP. CROSSWALK DURING PHASE 2

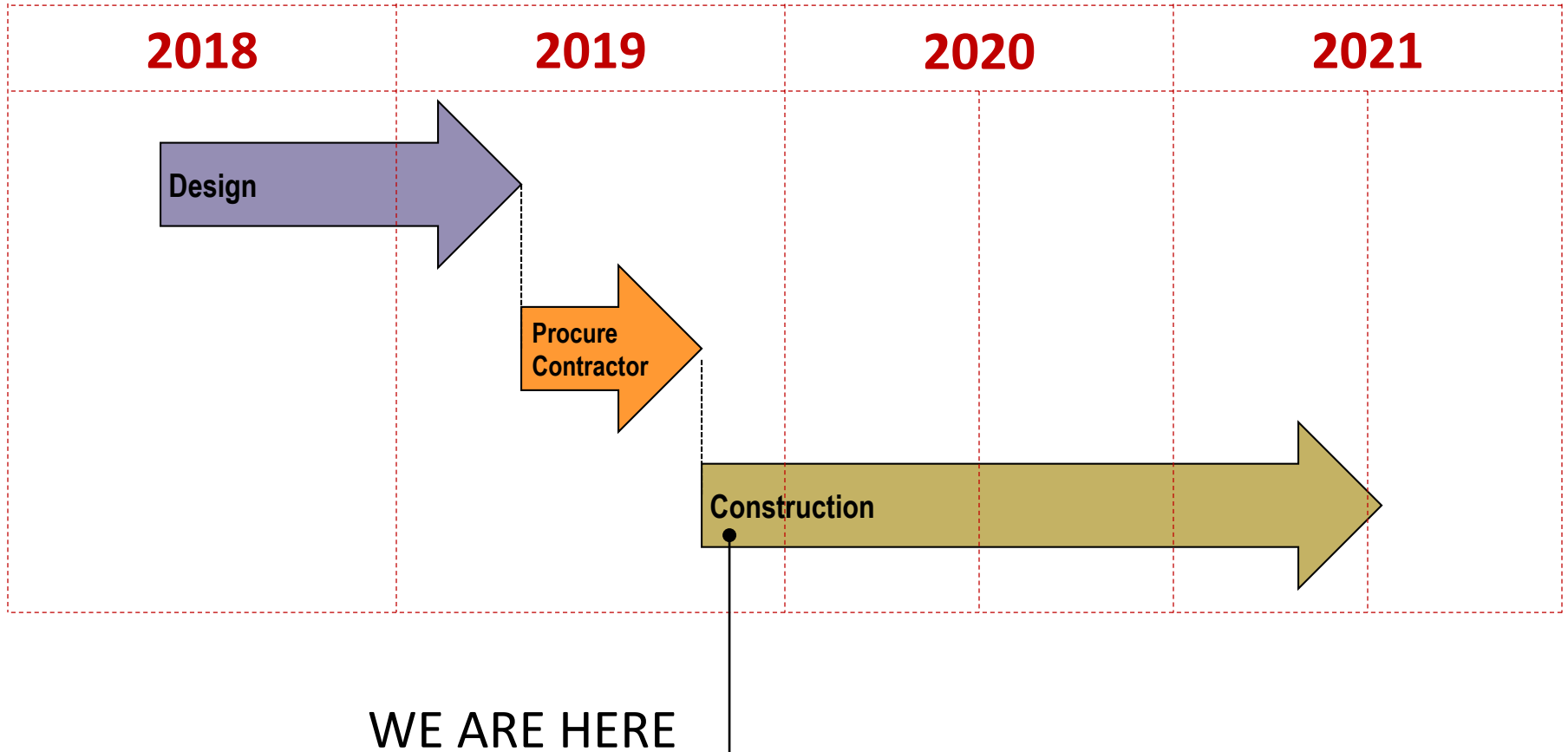
EXISTING BUS STOP

131
136
137

132



Project Schedule



Feedback from Public Meeting AUG'18

WHAT WE HEARD

- Escalators are unsafe
- The entire parking lot must be repaved
- Washington St. traffic is impeding pedestrians.

HOW WE RESPONDED

- All 3 will be modernized
- Work to be completed by end of 2019
- Flashing beacon will be installed



Feedback from Public Officials JAN'19

WHAT WE HEARD

- Manage impacts to residential parking on Washington Street
- Add bicycle parking on Washington Street
- Install bus shelter at Washington Street

HOW WE RESPONDED

- Minimum impacts to residential parking spaces; no lane shifts
- Added a net of 12 bicycle parking spaces
- Proposed as part of the station entrance



Outreach Information

- MBTA Project Website:

MBTA.com/OakGroveImprovements

- Project updates will be posted regularly on website

- MBTA Project Email:

OakGroveImprovements@MBTA.com





QUESTIONS & COMMENTS



**Massachusetts Bay
Transportation Authority**