



MBTA Bus Facility Modernization Program New Quincy Maintenance Facility

**South West Middle School, Quincy
January 29, 2020
6pm**

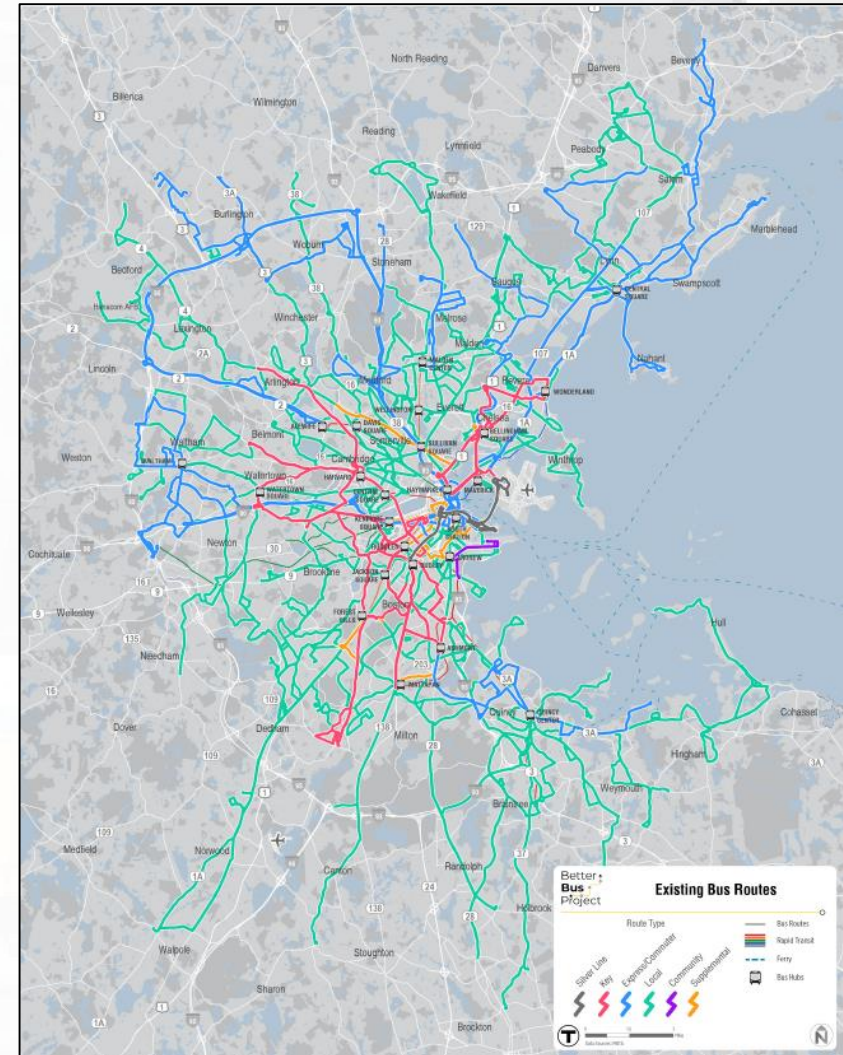
Agenda

- Introductions
- Overview of MBTA Bus System
- Proposed relocation of Quincy Bus Facility
- Benefits of new Bus Facility
- Near term MBTA uses
- Next Steps



MBTA Bus System Overview

- The MBTA serves 1.23 million trips every weekday, helping to support a sustainable and economically competitive metropolitan Boston region.
- After the subway, MBTA bus carries the largest share of riders (about 34%)
- MBTA operates 1,050 buses on 170 routes, serving over 8,000 bus stops across 51 cities and towns
- Bus plays an important role in helping the MBTA meet regional equity, economic development and environmental goals.



Bus Role in Meeting Regional Goals - Equity

- Buses serve significantly more minority riders and more low-income riders than other modes

Mode	% Low-income	% Minority
Bus	41.5%	48.0%
Commuter Rail	6.8%	14.6%
Ferry	3.7%	1.7%
Rapid Transit	26.5%	30.8%
Quincy Buses	43.7%	45.0%

- Bus routes operated out of the Quincy garage mirror the bus system as a whole



Bus Role in Meeting Regional Goals - Economy

- Massachusetts and its expanding economy has reached a tipping point for congestion
- Investment in transit resources is essential to the reliability of current operation and support of growing ridership

CONGESTION IN THE COMMONWEALTH

REPORT TO THE GOVERNOR **2019**



THE BOSTON GLOBE SPOTLIGHT TEAM

SEEING RED

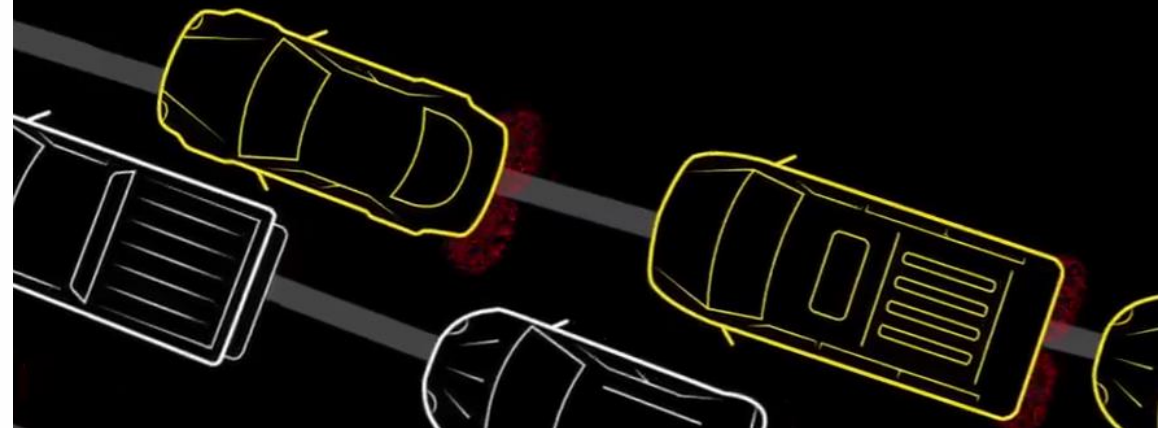
We endure some of the nation's worst rush-hour traffic. Our aging transit system is maddeningly unreliable. It is a crisis — a very slow moving crisis — that puts our region's economic prosperity at risk. Who is to blame? Can anything be done? The Globe Spotlight Team investigates.

[Get story alerts](#)

[Weigh in](#)

[Event](#)

[Newsletter](#)



Bus Role in Meeting Regional Goals - Economy

Quincy Center is undergoing one of the largest urban revitalization efforts anywhere in Massachusetts.

- 50 acres of mixed-use development
- Significant increase in retail and residential space
- Investment in transportation infrastructure critical to support growth

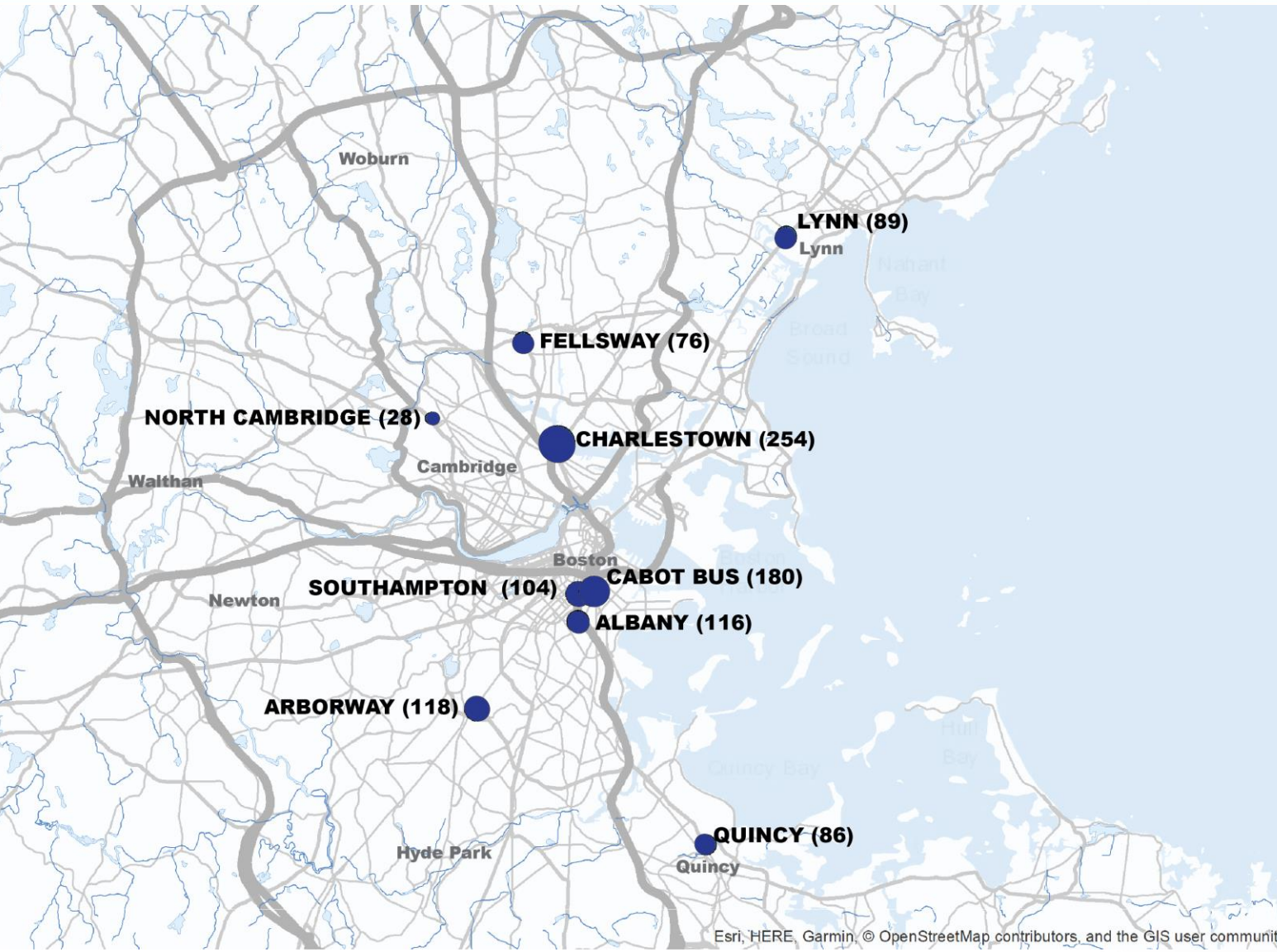


Bus Role in Meeting Regional Goals - Environment

- MBTA committed to promoting sustainability and delivering a more reliable bus system:
 - Replacing entire current bus fleet
 - Growing bus fleet to meet growing ridership and reduce the number of single occupancy vehicles
 - Procuring and testing battery electric buses (BEBs) to reduce greenhouse gas emissions
 - Offering incentives to build more density near transit



Existing Bus Maintenance Facilities



9

Maintenance garages

54

Average age of a facility

1925

Year of the oldest bus facility constructed

Quincy - In operation initially as streetcar facility (1904 or earlier); accommodates 86 buses



Bus Facilities Modernization Goals



New WRTA Quinsigamond Ave Bus Maintenance Facility

- Maintenance and storage capacity to meet future demand and network-wide modernization
- Conversion to zero-emissions (battery electric technology) fleet
- Modern conditions for our workforce through:
 - Continued state of good repair investments in existing garages
 - Construction of modern, state of the art facilities



Status of Quincy Bus Garage



New Quincy Bus Maintenance Facility – Site Search

Some of the criteria used for site search included:

- Parcel size and shape
- Location relative to the Quincy bus route network
- Roadway access
- Availability
- Topography
- Comparable land use history



Site History – 599 Thomas Burgin Parkway

- Current site of Lowes, constructed in 2010
- Land use has been industrial/commercial since 1883
- Former uses:
 - Union Gear and Sprocket Company
 - Ice warehouse
 - City of Quincy Water Department
 - Iron foundry
 - Fuel and oil company
 - Seafood processing company

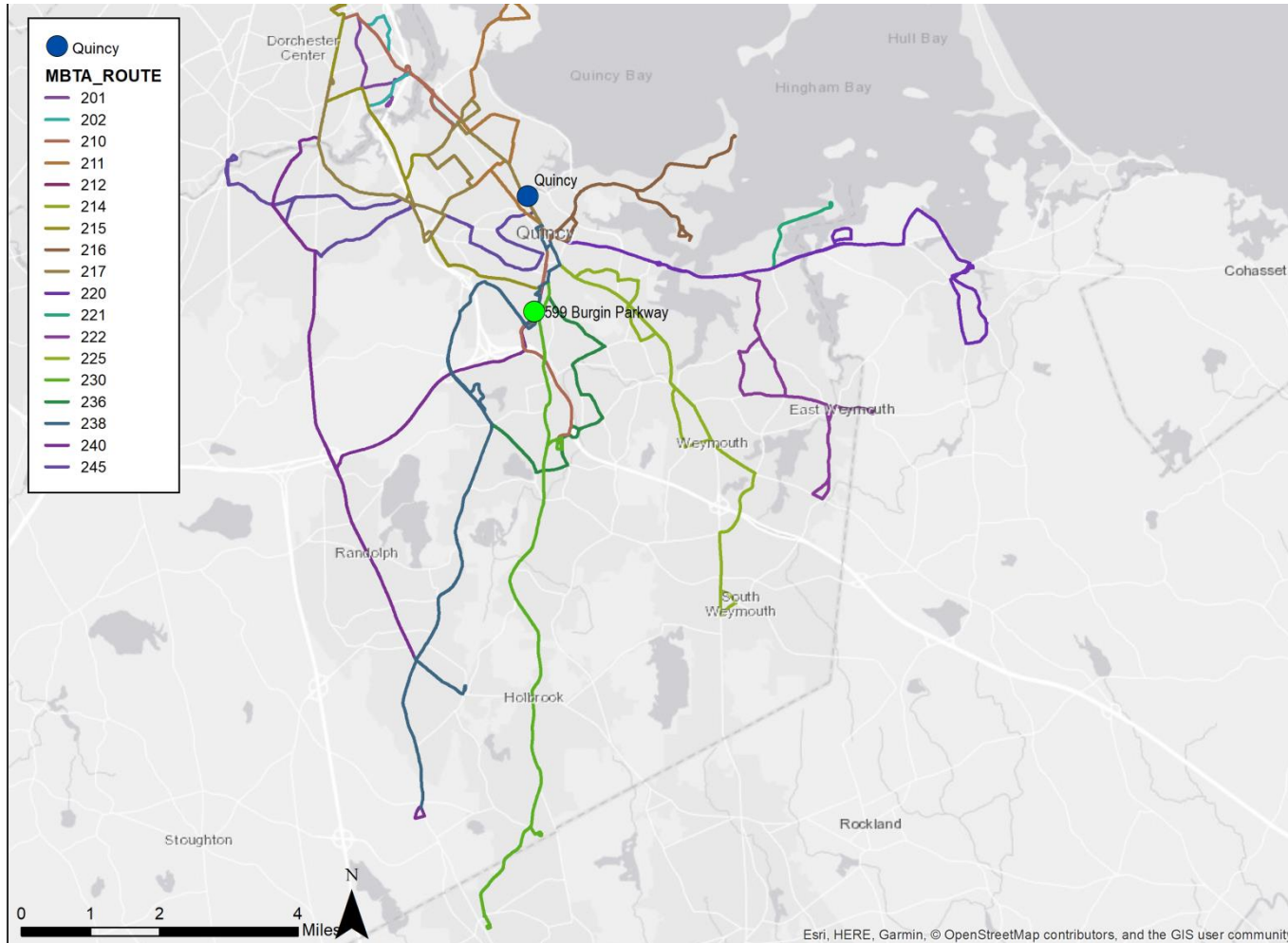


Benefits of a Modern, Environmentally Friendly Facility

- Quiet and clean operations on site
- Visual improvements to the site building and landscaping
- Improved pedestrian access
- Indoor facility
- Environmentally friendly and resilient design
- Allows for use of battery-electric buses



Benefits of a Modern, Environmentally Friendly Facility



- More reliable service
- Potential for additional service for Quincy
- First MBTA facility designed to support future battery electric bus fleet
- Less vehicular traffic than prior use



MBTA Near – Term Uses for the Site



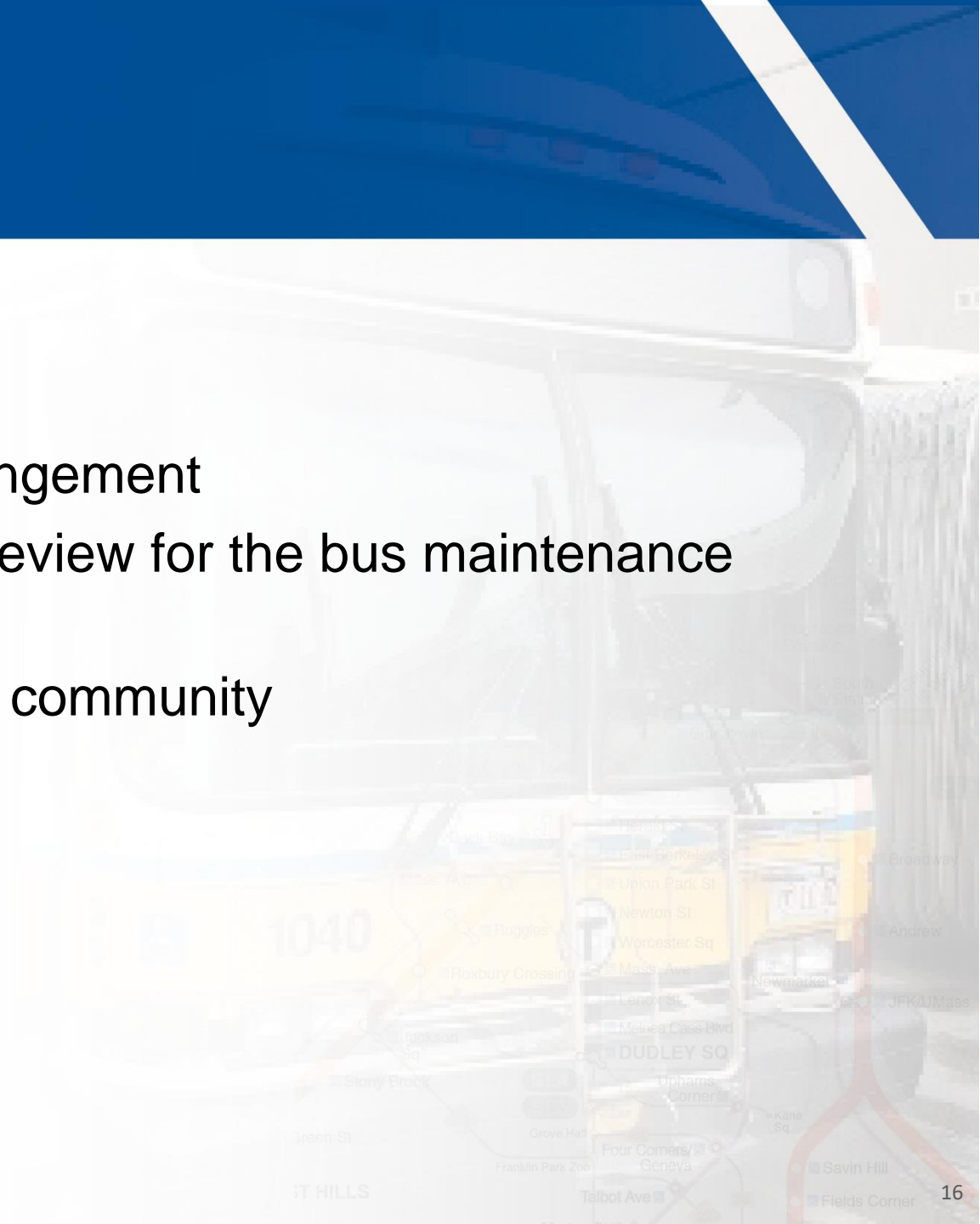
The MBTA has near term needs that can be met at the Lowe's site immediately, reactivating a currently vacant site:

- Commuter parking to expedite Quincy Adams garage reconstruction
- Indoor storage for spare parts and other equipment



Next Steps

- Finalize short term parking and storage arrangement
- Undertake state and federal environmental review for the bus maintenance facility
- Regular updates for elected officials and the community



Q/A

