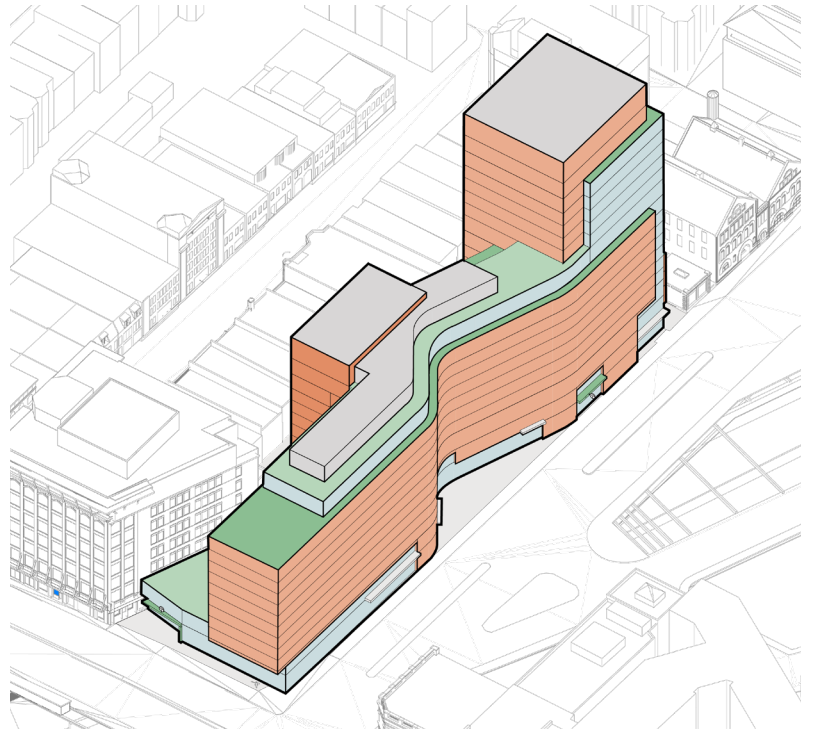
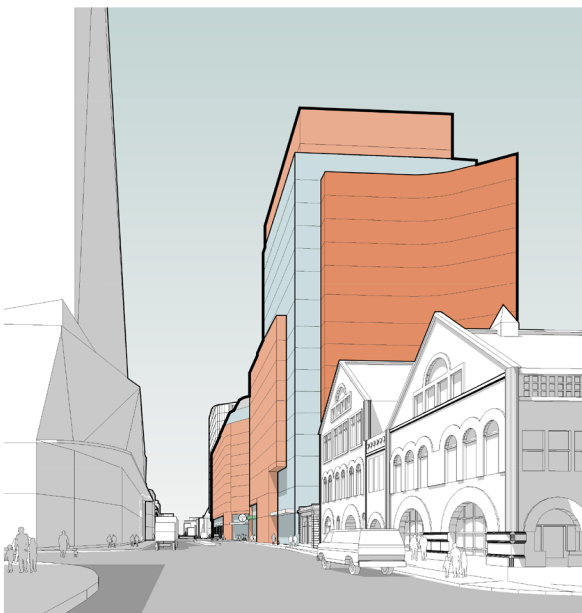


Parcel 13

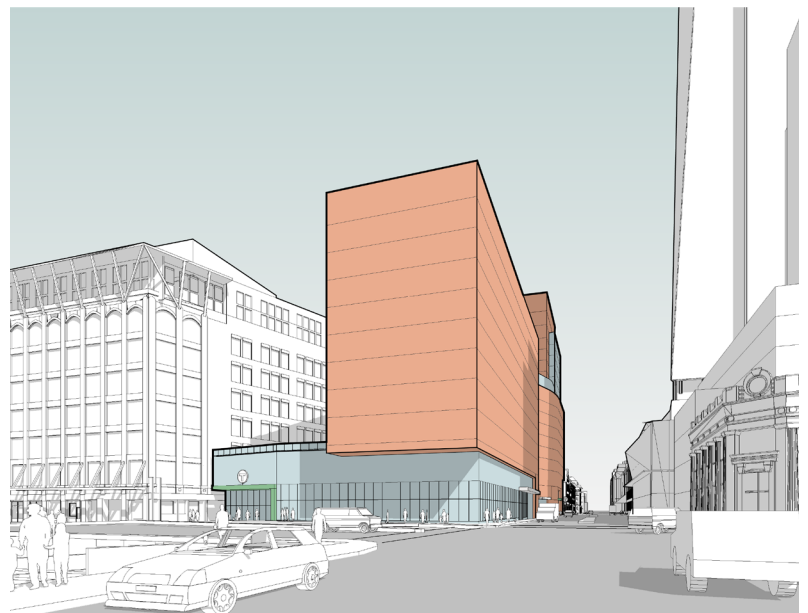
Commercial	150,000 gsf
Residential	125 - 150 condo units 275,000 gsf
Parking	150+ spaces
Total Area	432,000 sf zoning floor area 8 FAR
Building Height	12-17 stories 145' & 221' (zoning) 165' & 241' (structure)



Aerial view of Parcel 13



View west on Boylston Street



View east on Boylston Street