



# **Massachusetts Bay Transportation Authority**

## Winchester Center Station Demolition Work & Accessibility Improvements

---

Town of Winchester Virtual Public Meeting

February 23, 2021

Nathan Rae, Sr. Project Manager, MBTA Capital Delivery

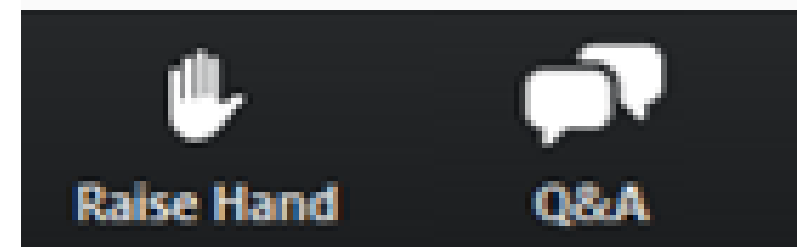
# Notification of Recording and Q&A Best Practices

## Notification of Recording

- This meeting will be recorded, and the recording and chat transcript are considered a public record
- This meeting recording will be posted on the project website following the conclusion of the meeting

## Q&A after the Presentation

- Please share only one question or comment at a time
- Use the **Q&A** button at the bottom of your screen to submit a typed question or comment
- Press the **RAISE HAND** button to share your question or comment verbally. Wait for the moderator to recognize you and unmute you before speaking



# Agenda

- Welcome and Opening Remarks
- Presentation of the Demolition Work
- Project Update and Presentation of the Accessibility Improvements
- Question and Answers



# Winchester Station Project Team

## MBTA

- Chief of Capital Delivery
- Deputy Chief of Capital Delivery
- Sr. Director of CR Stations and Facilities
- Sr. Director CR Infrastructure

Katie Choe  
Nazanin Mossahebi  
Anthony DeDominicis  
Maribel Kelly

## Panelists – Project Team

- Director of Special Projects
- MBTA Sr. Project Manager
- SPS New England Sr. Project Manager
- SPS New England Project Manager
- Jacobs Project Manager

Angel Donahue-Rodriguez  
Nathan Rae  
Jason Peddle  
Joe McInnis  
Mark Thompson







---

## *Demolition Work*



# Project Overview

- January 7, 2021 – Winchester Station was closed as a result of an inspection that indicated significant infrastructure deterioration:
  - SPS New England engaged to manage this demolition work under the On-Call Repairs contract
- \$1.2 million critical safety-based infrastructure demolition work
- Work consist of demolition to portions of the ramps, platforms, and canopy structures





# Existing Conditions



- Station ramps and platforms deteriorating
- Platform curbs spalling, causing railing posts to deteriorate
- Station does not meet current MBTA Commuter Rail Design, ADA, or MAAB standards/requirements for accessibility





# Project Details

- Preconstruction Surveys
- Implement Traffic Management Control Plan
- Implement Pest Control Plan
- Installation of temporary fencing
- Demolition work of station ramps, platforms and canopies
- Station is currently closed and will remain closed during construction





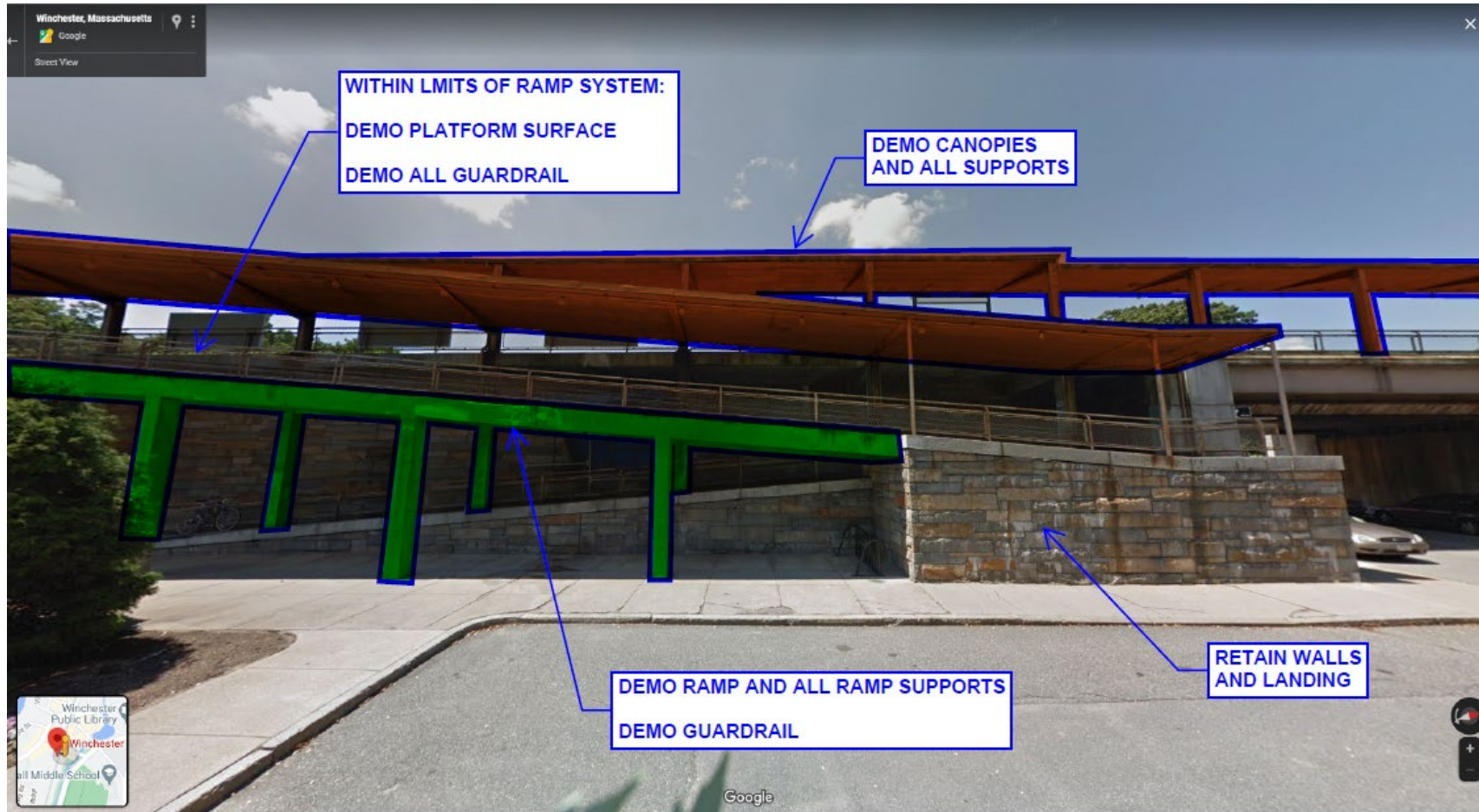
# Project Details – Station Demolition



**WINCHESTER CENTER STATION  
OUTBOUND PLATFORM / TRACK  
SOUTH END**



# Project Details – Station Demolition



**WINCHESTER CENTER STATION  
OUTBOUND PLATFORM / TRACK  
SOUTH END**





# Project Details – Station Demolition



**WINCHESTER CENTER STATION  
OUTBOUND PLATFORM / TRACK (INBOUND SIMILAR)  
WATERFIELD ROAD**





# Project Details – Station Demolition



**WINCHESTER CENTER STATION  
OUTBOUND PLATFORM / TRACK  
NORTH END - QUILL ROTARY**



# Project Details – Station Demolition



WINCHESTER CENTER STATION  
INBOUND PLATFORM / TRACK  
SOUTH END





# Project Details – Station Demolition



**WINCHESTER CENTER STATION  
INBOUND PLATFORM / TRACK  
MIDDLE OF STATION**





# Project Details – Station Demolition



**WINCHESTER CENTER STATION  
INBOUND PLATFORM / TRACK  
MIDDLE OF STATION**





# Project Details – Station Demolition



WINCHESTER CENTER STATION  
INBOUND PLATFORM / TRACK  
NORTH END



# Potential Project Impacts

## Service Impacts:

- Station closed to passengers. Trains will run through the station
- MBTA Laraway Road Bus Stop will be temporarily out of service. Alternative service at the intersection of Main and Vine Streets

## Temporary Construction Impacts May Include:

- Noise, dust and vibration impacts due to demolition work
- Traffic impacts due to construction activity



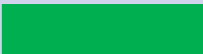

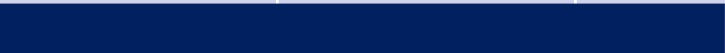



# Potential Project Impacts: Mitigation

- Preconstruction Surveys
- Construction Hotline
- Vibration Monitoring
- Noise Monitoring
- Pest Control
- Dust Control Plan
- Traffic Management Plan



# Project Schedule

2021	FEBRUARY	MARCH	APRIL	MAY
<b>Phase 1 – Mobilization:</b> Equipment brought on site, implement Traffic Management Control, implement Pest Control Plan, installation of temporary fencing				
<b>Phase 2 – Abatement</b>				
<b>Phase 3 – Heavy Demolition:</b> Demolition of the existing structure				
<b>Phase 4 – Demobilization:</b> Equipment removed from the site. Project completed				





---

*Accessibility  
Improvements*





# Project Goals and Scope

## SAFETY

- Install permanent and emergency lighting, security cameras at platforms and passenger assistance telephone

## ACCESSIBILITY

- Install two new, fully accessible, high-level side platforms, new covered stairwells, wayfinding signage, new platform canopy and benches, upgrade sidewalk
- Install new elevators and stairs on south end of station to connect platform to ground level, as well as the outbound side of station to connect platform to ground level
- Install new stairs at middle of station to access MBTA bus stop and town center

## SUSTAINABILITY

- Use new Fiber Reinforced Polymer (FRP) composite panels for platforms and ramps to provide corrosion-resistant structures that can better withstand weather, de-icing chemicals and high foot traffic

## RESILIENCY

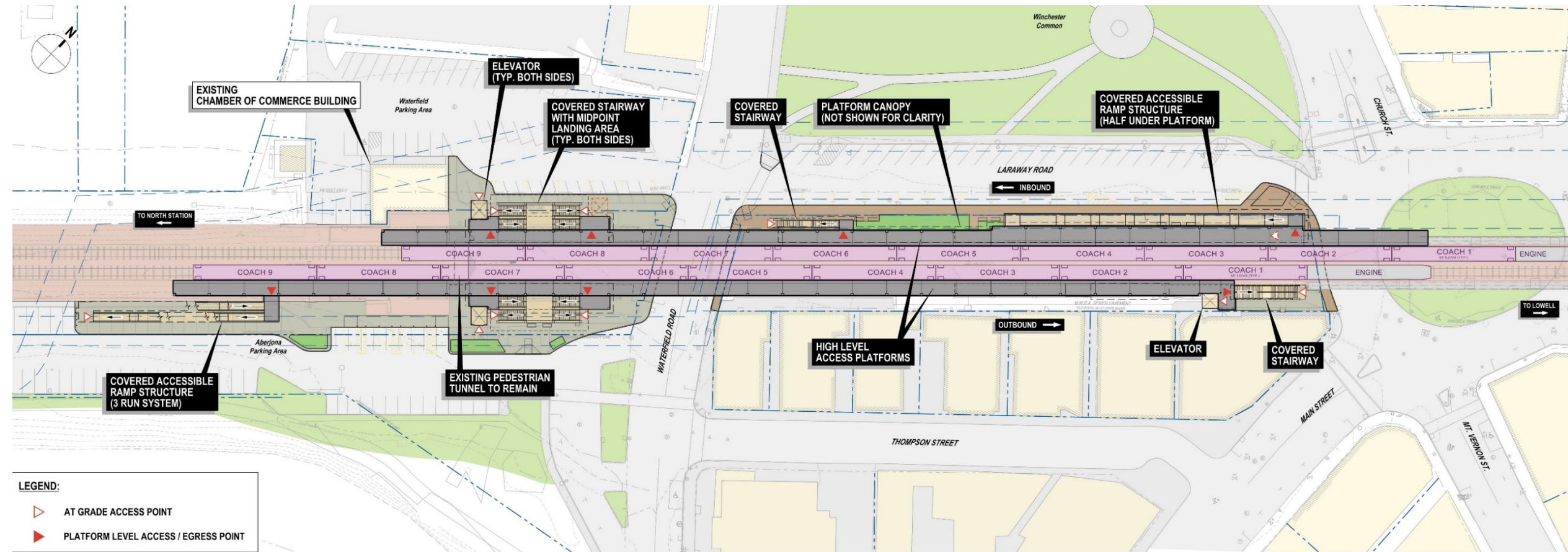
- Elevated equipment rooms to achieve resiliency design parameters, new elements to be located to maintain operations during extreme environmental events

## OPERATIONS

- High-level boarding shortens dwell time, shorter trip times and enhances customer experience



# Future Station Plan





# Future Station Rendering





# Future Station Rendering

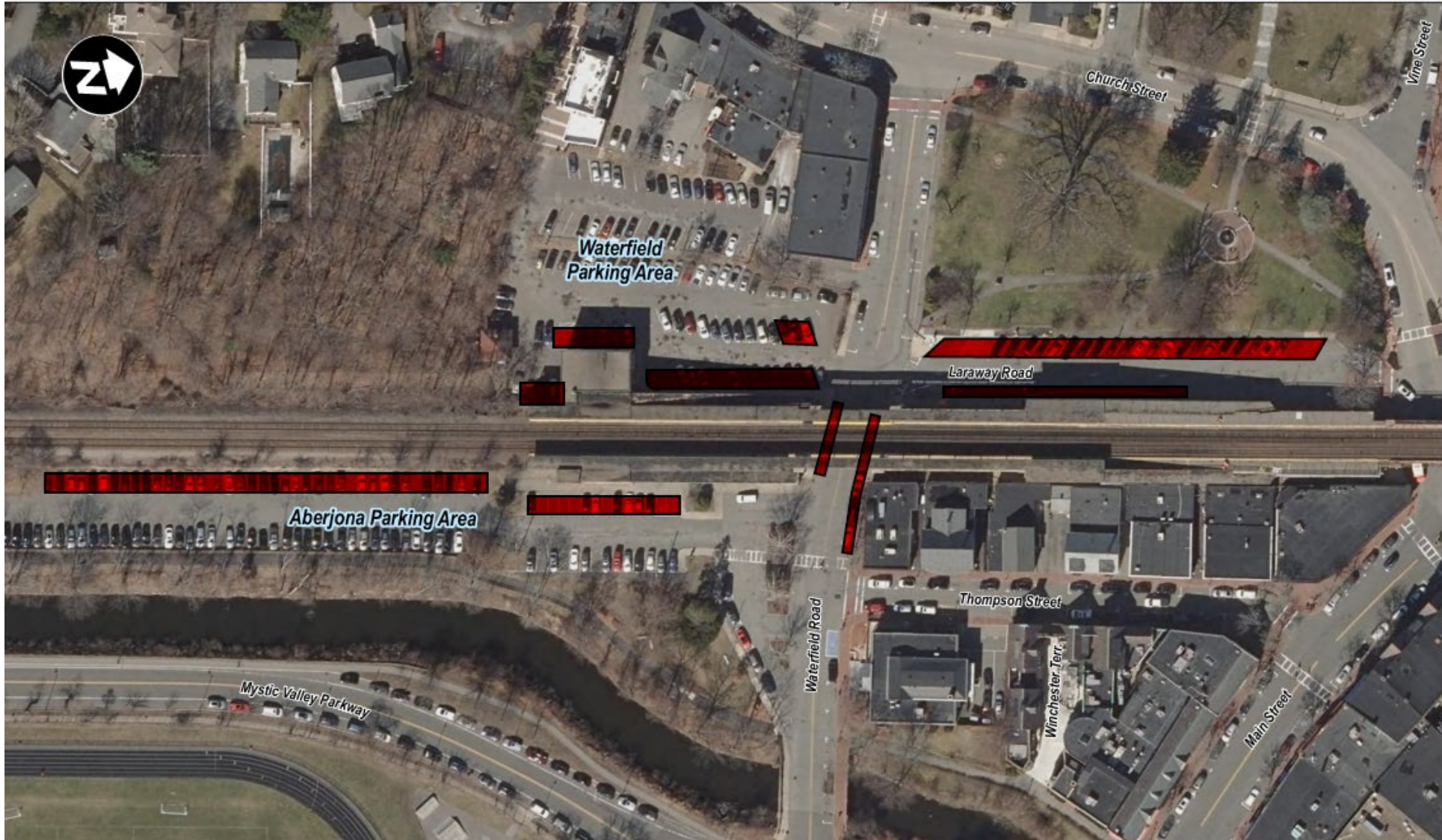


# Transit Alternatives During Construction

- Proximity to other transit options:
  - Route 134 Bus to Orange Line (Wellington)
  - Wedgemere Station (0.7 miles south)
- Walk/bike/drop-off at Wedgemere Station
  - Additional bike storage



# Parking Impacts





# What To Expect During Construction

- Pre-Construction Surveys
- Mitigation of Construction Impacts
- Field Personnel On Site
  - MBTA Field Staff (Resident Engineer and Field Inspectors)
- Communication Resources:
  - Construction advisories and updates (website, emails)
  - Hotline - (781) 218-9717
  - Project Email Address – [WinchesterStation@mbta.com](mailto:WinchesterStation@mbta.com)

# Updated Project Schedule

- **Design Phases:**
  - 15% Design – December 2015
  - 30% Design – October 2016
  - 60% Design – November 2019
  - Final Design – March 2020
- **Procurement:**
  - Advertisement – Spring 2021
  - Project Award – Summer 2021
- **Construction Phase:**
  - Begin in Fall 2021

# Public Outreach

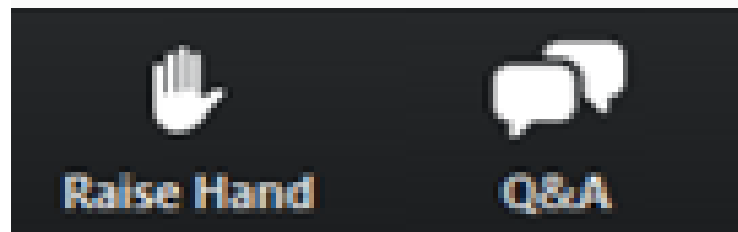
- **Project email address:**  
[winchesterstation@MBTA.com](mailto:winchesterstation@MBTA.com)
- **Construction hotline: (781) 218-9717**  
For construction-related concerns and questions.
- **Project website:**  
[www.mbta.com/winchesterstation](http://www.mbta.com/winchesterstation)



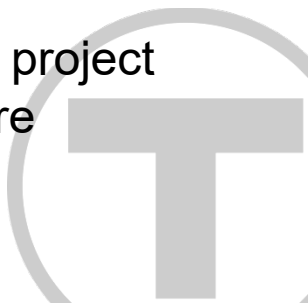


# Questions & Answers

- Please share only one question or comment at a time.
- To ask a question via phone, dial \*9 and the moderator will call out the last 4 digits of your phone number and unmute your audio when it is your turn.
- Use the “**Q&A**” button to submit a typed question or comment.
- Press the “**Raise Hand**” button to share your question or comment verbally.
  - After you raise your hand, wait for the moderator to recognize and unmute you before speaking.
  - After you share your question or comment, we will lower your hand and you will be muted to allow the team to respond and provide opportunities for others to participate.



You may also submit your questions or comments if we run out of time, after the meeting, to the project email address: [WinchesterStation@mbta.com](mailto:WinchesterStation@mbta.com) or visit [www.mbta.com/WinchesterStation](http://www.mbta.com/WinchesterStation) for more information.





---

*THANK YOU!*

