



# **Virtual Public Meeting | E Branch 28-Day Full Access**

---

***Track & Intersection Upgrades (August 2-29, 2021)***

*July 14, 2021*



Raise Hand



Q&A

- Use the “**Q&A**” button to submit a typed question or comment
- Press the “**Raise Hand**” button to share your question or comment verbally. Wait for the moderator to recognize and unmute you before speaking.
- If you have joined by phone only, you may “raise your hand” by pressing the star button and then nine (\*9)

*After you speak, we will lower your hand and you will be muted to allow the team to respond and provide opportunities for others to participate*

**Comments may also be sent to [GLT@mbta.com](mailto:GLT@mbta.com)**

# **SAFETY** MOMENT

*Wear a face covering when riding public transit*

*Ride Safer*

---

# Agenda

- **Green Line Transformation Overview**
- **E Branch Track and Intersection Upgrades**
- **Construction Sequence**
  - Traffic Management
  - Alternative Service
- **Making Connections During Construction**
- **Community Engagement & Outreach**



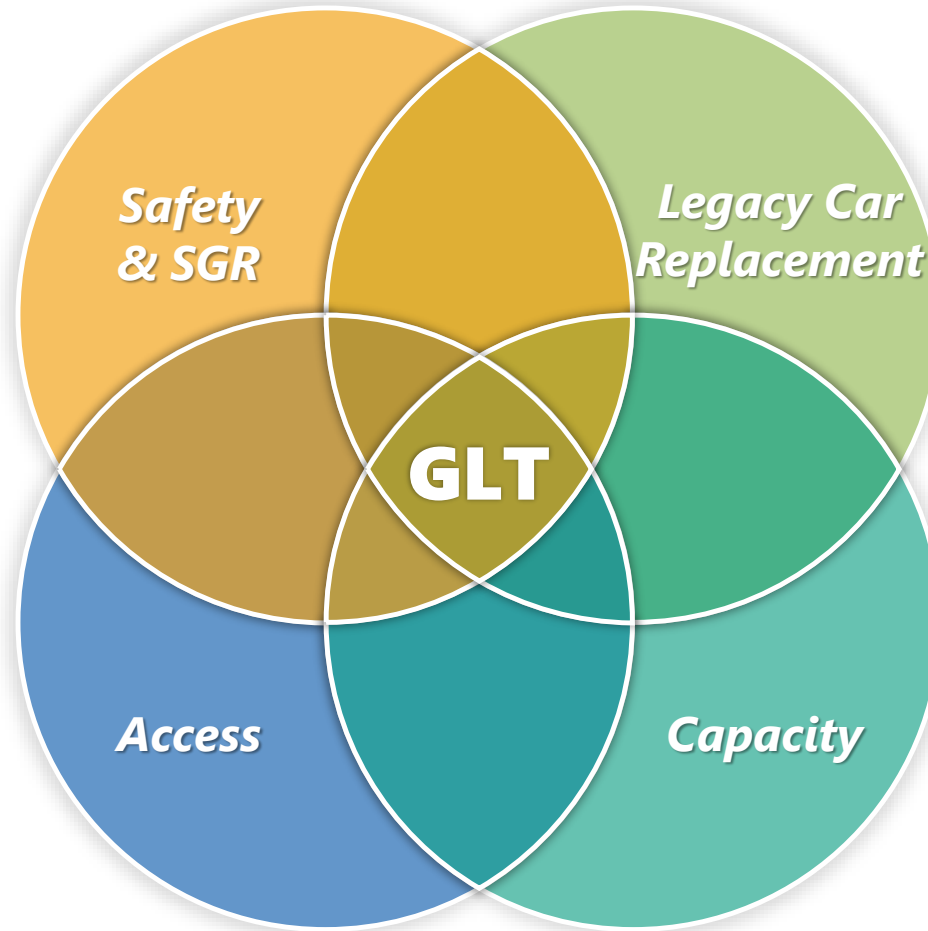
***Current Conditions at Tremont St Intersection***

# Levels of Transformation

*Achieving Multiple Goals*

<b>Level 0</b>	<b>Safety &amp; State of Good Repair (SGR)</b>
<b>Transformative Outcomes</b>	
<ul style="list-style-type: none"> <li>• Minimize risk of service disruptions</li> <li>• Reduce speed restrictions</li> <li>• Bring assets to state of good repair</li> </ul>	

<b>Level 1</b>	<b>Accessible Stations</b>
<b>Transformative Outcomes</b>	
<ul style="list-style-type: none"> <li>• New or upgraded platforms</li> <li>• Compliant height, width &amp; slope</li> <li>• Barrier-free pathways &amp; wayfinding</li> <li>• Detectable warning panels</li> </ul>	



<b>Level 2</b>	<b>Legacy Car Replacement</b>
<b>Transformative Outcomes</b>	
<p>Operate and maintain single Type 10s</p> <ul style="list-style-type: none"> <li>• More <b>efficient</b> O&amp;M</li> <li>• 100% of Green Line trains <b>accessible</b></li> <li>• More <b>equitable</b> across the Green Line</li> </ul>	

<b>Level 3</b>	<b>Increased Capacity</b>
<b>Transformative Outcomes</b>	
<p>Additional vehicles and infrastructure for two-car Type 10 operation</p> <ul style="list-style-type: none"> <li>• Increase core capacity of subway</li> <li>• Reduce headways and journey time</li> <li>• Expand yards and facilities</li> </ul>	

# Green Line Transformation | *What We Accomplished*

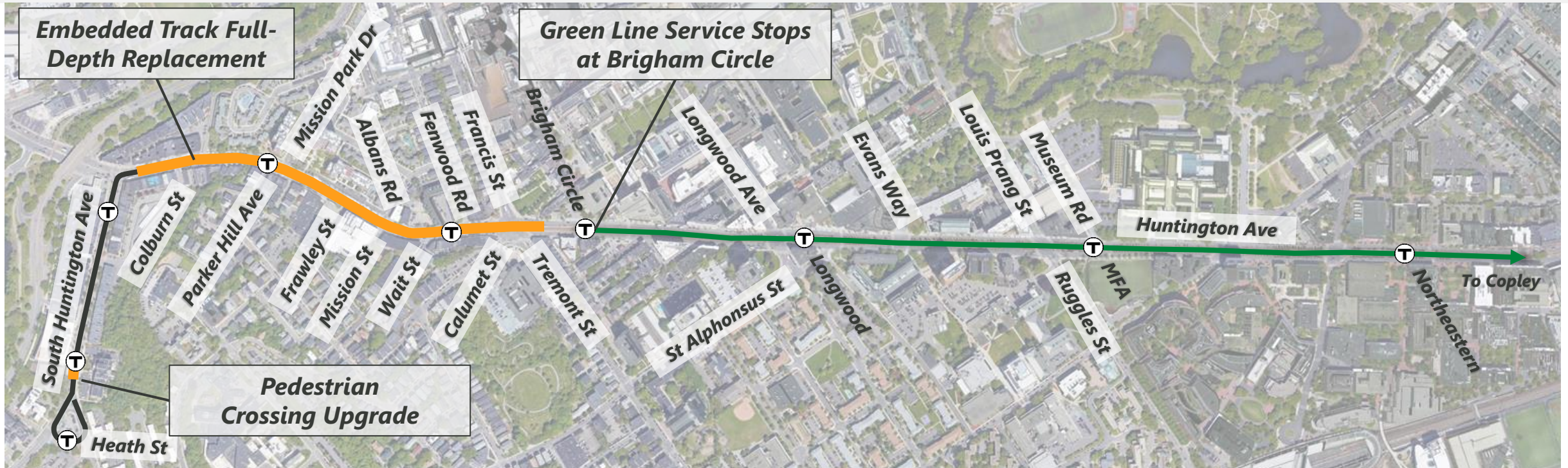
Improved the Green Line **quality of service** for all riders

**2019-2020:** Executed significant **Safety & State of Good Repair** (Level 0) improvements during construction

- ✓ Replaced **12 miles of track (25% of System)**
- ✓ Upgraded **45 Vehicle Intersections** and **Pedestrian Crossings**
- ✓ Replaced **10 units of special trackwork** on the D and C Branches



## E Branch 28-Day Full Access Closure | Heath Street – Brigham Circle



- **Green Line Closed Beyond Brigham Circle (28 Days, August 2 – 29, 2021)**  
*Green Line operates as normal up to and including Brigham Circle*
- **Replacement of 4,000 Feet of Embedded Track**  
*New pavement, subgrade, ballast, ties, running rail (East of South Huntington Curve – Brigham Circle)*
- **Tremont & Huntington Intersection Upgrade (7 Days, August 18 – 25)**  
*Open to emergency vehicles only*

# Benefits | *What will be different when the work is completed?*



## ***The Impact***

Improves the ride, walkability, and appearance of the Mission Park area



## ***Access and Safety***

Better surface for riders, drivers, bicyclists, pedestrians



## ***The Trip***

Faster trip from speed restriction removal



## ***The Experience***

Smoother and quieter for riders and residents



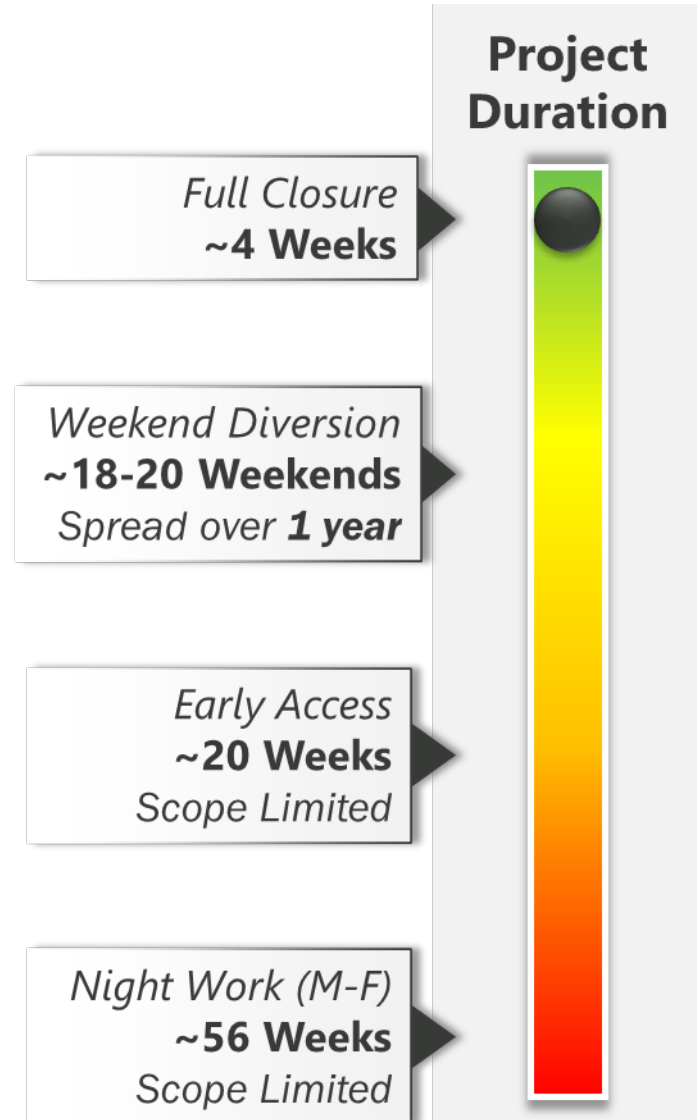
***Current Conditions at Wait St and Huntington Ave***



# Acceleration Strategy | Condensed Schedule

## 28-Day Full Access Closure is more efficient than 1 year of weekend diversions or night work

- Improves work site safety
- Allows complex work that cannot be done over a weekend or overnight
- Eliminates repeated setup/breakdown time
- Reduces overall duration of impact to the corridor
- Saves time and resources



# Municipal and Stakeholder Coordination | *Supporting the Community*

- City of Boston and Office of Neighborhood Services
- Medical Academic and Scientific Community Organization (MASCO)
  - Brigham and Women's Hospital
  - Mass Eye and Ear
- The Fenway Alliance
- VA Boston Healthcare System
- New England Baptist Hospital
- Mission Hill Main Streets Association
- Elected Officials





*Current conditions near Mission Park Garage*

---

## Construction Sequence





**Segment 2: Mission Park Dr to Fenwood Rd**

**Segment 3: Tremont St Intersection**

**Segment 1: South Huntington Ave to Frawley St**

E Branch Timeline*	JULY											AUGUST																													
	19	20	21	22	23	24	25	26	27	28	29	30	31	1	2	3	4	5	6	7	8	9	10	11	12	13	14	15	16	17	18	19	20	21	22	23	24	25	26	27	28
<b>0</b> Prep-work (9pm-5am) St Albans Rd to Mission Park Garage	█																																								
<b>1</b> S. Huntington Ave to Frawley St												█																													
<b>2</b> Mission Park Dr to Fenwood Rd																						█								█											
<b>3</b> Tremont St Intersection†																														█		█									

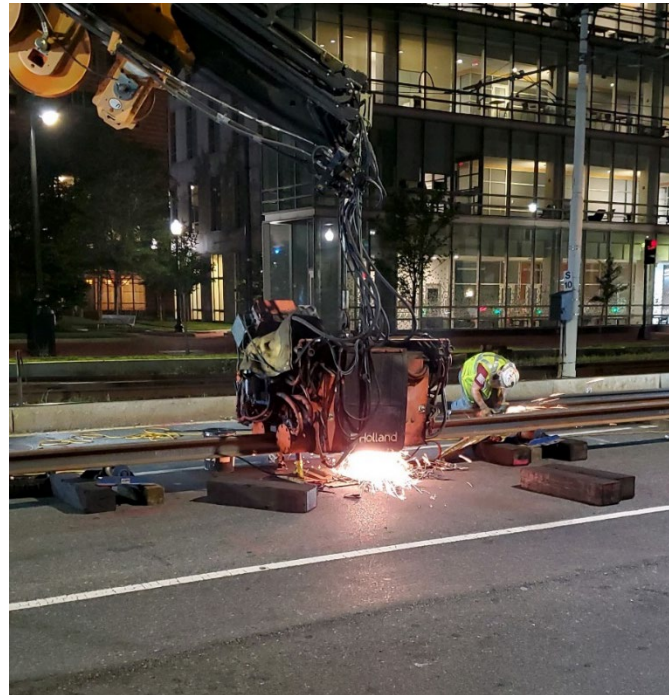
- \*Schedule subject to change with weather conditions and in accordance with public health directives
- Tremont St Intersection workzones to extend back to Fenwood Road
- †Evening of August 18 to morning of August 25

# Prep-work (9pm-5am) | St Albans Rd to Mission Park Garage



**July 19 – August 1 (Nights, 9pm to 5am)**  
**Work includes:**

- **Welding** rail together and preparing the area for the upcoming construction
- **Rail storage** in parking spaces along Huntington Ave Westbound (St Albans Rd to Mission Park Garage until August 8)

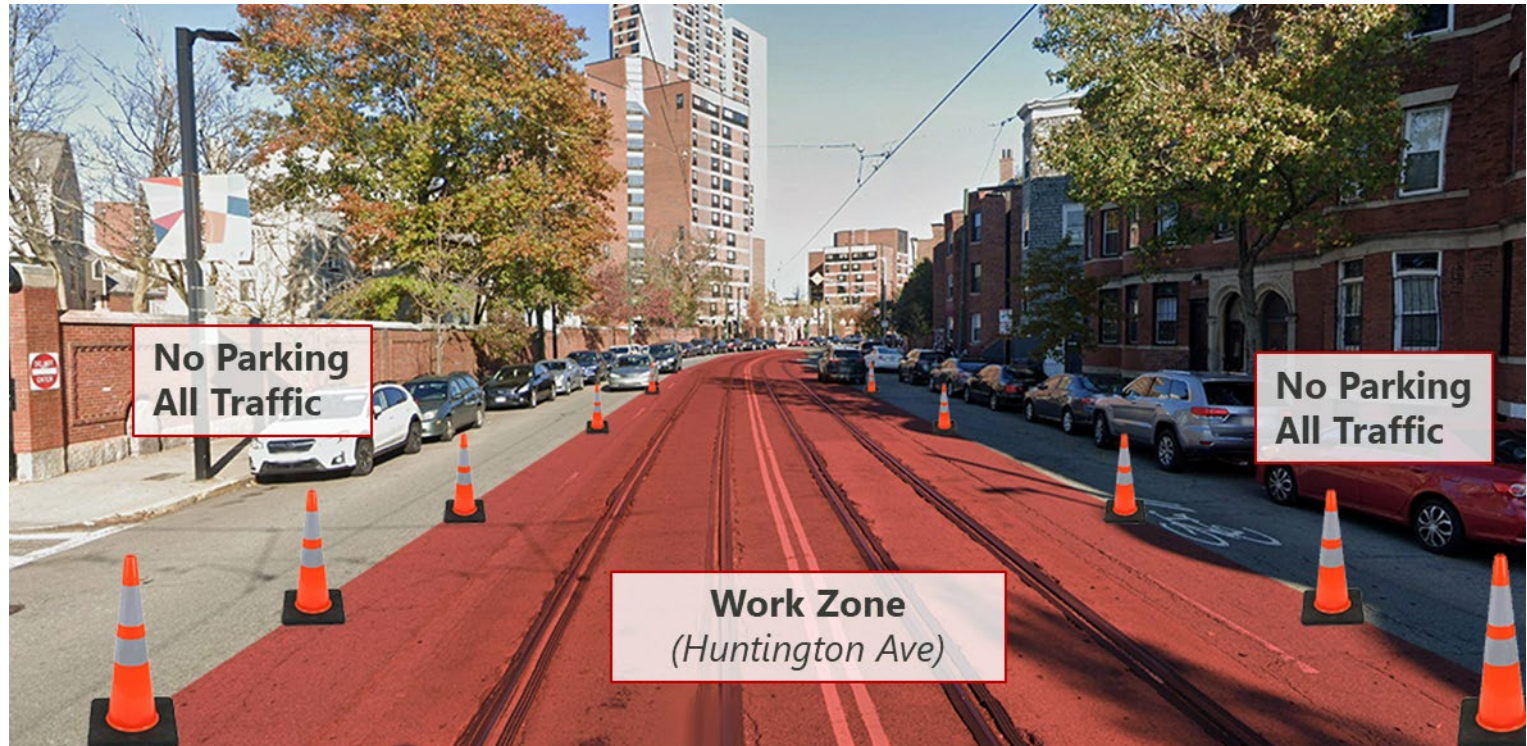


# Typical Work Zone | *Huntington Ave*

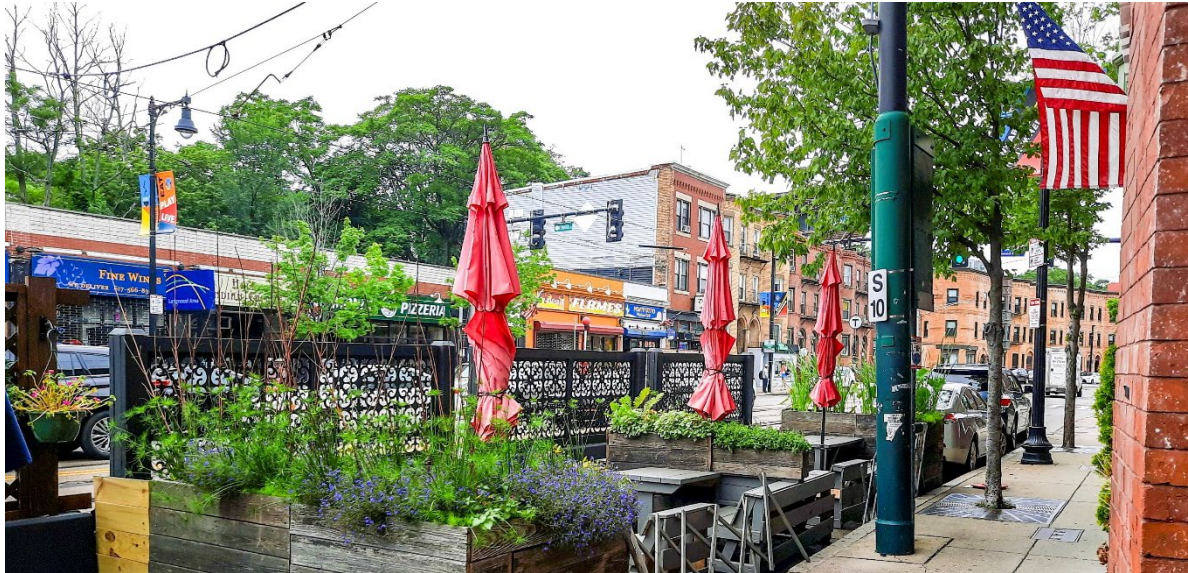


Huntington Ave | between South Huntington Ave - Francis St/Tremont St

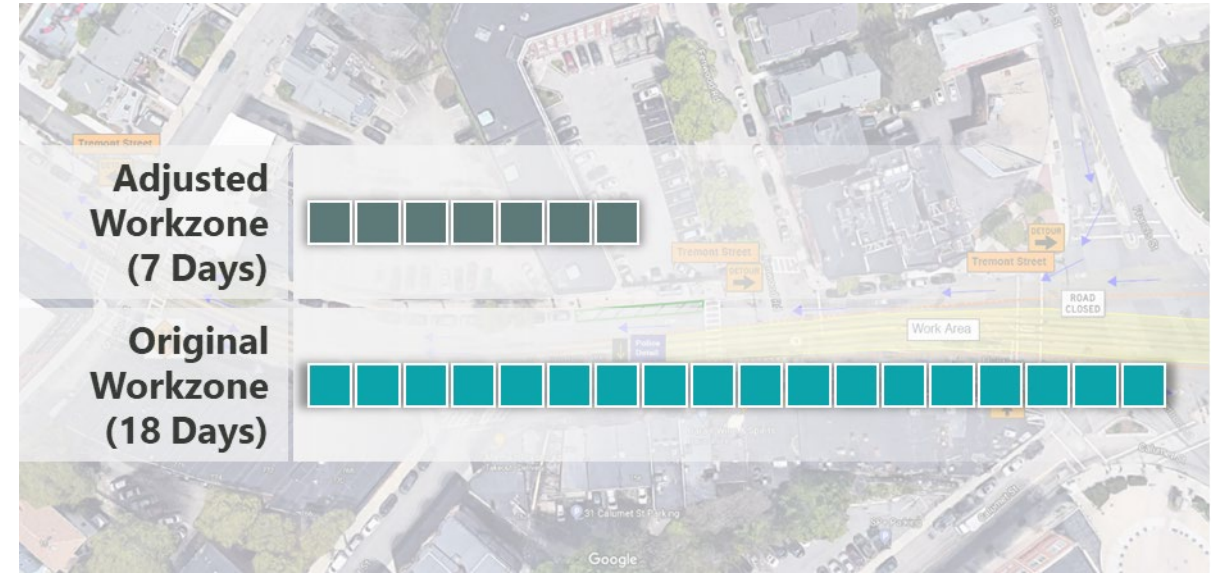
- Contractor to occupy **center lanes** to replace track and repave road
- **One lane, each direction** for passenger vehicles and buses
- **Parking will not be permitted** along the work zones during construction (24/7)



# Advance Coordination | Local Businesses



- ✓ **Outreach to local businesses** to communicate the impacts of the closure
- ✓ **Onsite meetings** with business owners

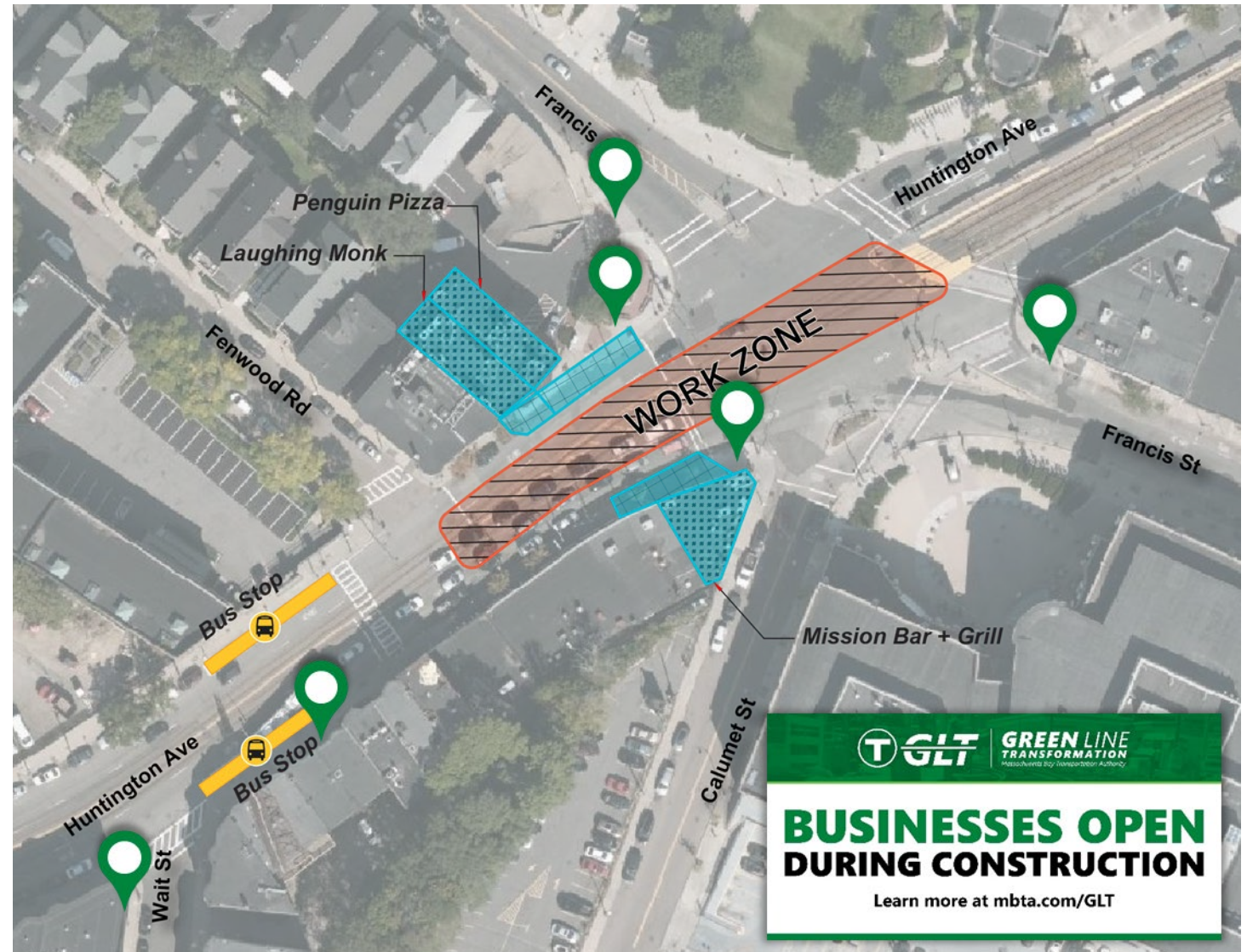


- ✓ **Reworked workzone plan to reduce impacts** on the restaurants from 18 days to 7 days

## Brigham Circle | Supporting Local Businesses

### During the closure, GLT will:

- Have daily presence in the area to follow-up on local concerns
- Place **"Businesses Open During Construction"** signs to support local businesses (9 along Huntington Ave)
- Ensure that we take every opportunity to conduct the work as quickly as possible





# Minimizing Noise



**The loudest work will occur when crews cut rails with a saw and tamp the track to the proper elevation**

**We use several strategies to minimize noise disruptions for neighbors**

- Using self-adjusting backup alarms, silencers, or mufflers on equipment
- Limiting truck and equipment idling
- Lining dumping bins, hoppers, and trucks with sound-deadening material
- Using noise blankets and shielding where possible

We monitor noise levels and respond to all noise complaints. If you would like to report a noise issue, please call the 24/7 hotline at **508-676-3517**



---

## Making Connections During Construction



# Maintaining Access | *Traffic Management Plan*



**Vehicle Access**

- **Advance Warning Signs** for general traffic to detour from construction
- **Police detail to maintain emergency access** through Francis St/Tremont St intersection
- U-Turns allowed at Longwood intersection, **with police detail**
- Support delivery access for local businesses and shops (loading zones)



**Bus Access**

- **Route #39 bus to operate at existing stops**
- **#66 bus northbound bus will be detoured** via St. Alphonsus St and Longwood during Francis/Tremont intersection construction

# Maintaining Access | *Traffic Management Plan*



**Pedestrian Access**

- Maintain pedestrian access and crosswalks at each end of the work zone
- Officer enforcement to assist pedestrians through each intersection



**Current Conditions near Shepherd Ave**




**Current Conditions at Mission St**

# Alternative Service | Enhanced Route 39 Bus Service



Additional MBTA bus service **between Heath St and Brigham Circle** will supplement the E Branch schedule

- Free for riders boarding between Heath St and Brigham Circle

 <b>Route 39 Service</b>	<b>Enhanced Service</b>
<b>Peak Period</b>	<b>5-10 Minutes</b>
<b>Non-Peak Period</b>	<b>8-10 Minutes</b>
<b>Weekends</b>	<b>10-12 Minutes</b>



**For the health & safety of our riders, bus service will be monitored and adjusted to reduce crowding**



---

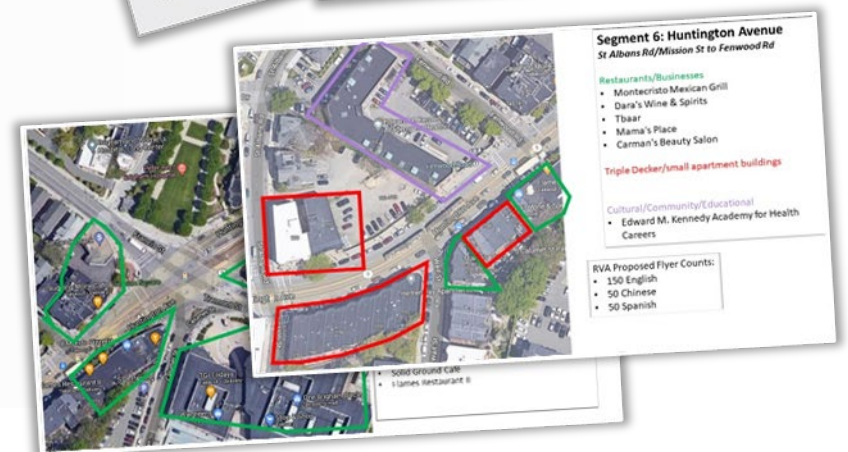
## Community Engagement & Outreach



# Community Engagement | Keeping Riders and Stakeholders Informed



- ✓ Emailed 4,000+ subscribers to announce the project
- ✓ Posted project details on website ([mbta.com/glinterssections](https://www.mbta.com/glinterssections))
- ✓ Distributed 5,000 Flyers in 3 Different Languages
- ✓ Virtual Public Meeting
- ✓ Responding to Questions [GLT@mbta.com](mailto:GLT@mbta.com) (ongoing)
- ✓ Weekly Reporting on [MBTA.com/glt](https://www.mbta.com/glt) (Fridays)



# Stay Connected

## Ask Questions and Be Informed



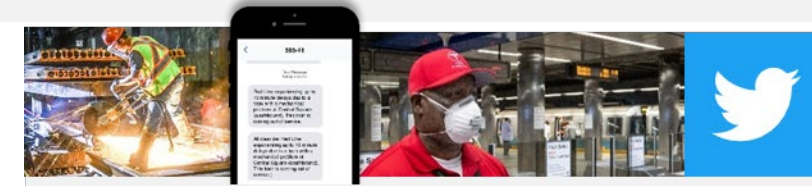
- ✓ Contact [GLT@mbta.com](mailto:GLT@mbta.com)
- ✓ Call 24/7 noise hotline: **508-676-3517**
- ✓ Follow on social media
- ✓ **Subscribe to alerts**  
[mbta.com/alerts](https://mbta.com/alerts)
- ✓ Check website for up-to-date info [mbta.com/GLIntersections](https://mbta.com/GLIntersections)

## Alternate Routes and Transit Options



- ✓ Regular Green Line service west of Brigham Circle replaced by **enhanced Route 39 bus service**
- ✓ **Accessible pedestrian pathways well-marked** during closure
- ✓ Advanced messaging **signage for drivers**

Contact us at: [GLT@mbta.com](mailto:GLT@mbta.com)  
[www.mbta.com/GLT](https://www.mbta.com/GLT)



## Online & Social Media

Service Alerts  
Project Updates

18 INTERSECTION UPGRADES +  
4,400 FEET OF NEW TRACK =

mbtapics  
Park Street MBTA Station - Green & Red Line

Please Join the Green Line Transformation Team for a Virtual Public Meeting (via Zoom) on the E Branch 28-Day Full Access: Track & Intersection Upgrades  
Virtual Public Meeting: July 14, 2021

Be Part of Transforming the Green Line

The goal of the Green Line Transformation is to improve the light rail system's increased capacity and enhanced accessibility, through fleet modernization, new state-of-the-art technology.

The GLT team would like to hear what you think would transform and improve the system. Please share your ideas, suggestions, and feedback. We will be using the form below. Our team will review your ideas weekly and we want to see the biggest difference. Thank you for helping us transform the Green Line!

\* Required

1. Briefly describe your idea \*

Enter your answer

Please join GLT for an online public meeting to learn about the E Branch 28-Day Full Access Closure scheduled for August 2 - 28, 2021. During the closure, we will replace 4,000 feet of existing track between South Huntington Avenue and Brigham Circle Station, including new pavement, subgrade, ballast, ties, and running rail. We will also upgrade and reconstruct the Vermont Street/Francis Street intersection. Work along Huntington Avenue will be completed to maintain access for vehicles and pedestrians.

**Project Benefits:**

- Mitigate risk of service disruptions by replacing track that is beyond its planned design life
- Provide a smoother experience for passengers, bicyclists, and drivers.

The meeting will be held online, via Zoom. The project team will begin the meeting with a presentation at 6:00 PM, followed by time for Questions + Answers.

**See how to join on the project website under Upcoming Events:**  
[www.mbta.com/GLIntersections](https://www.mbta.com/GLIntersections)

**A recording of the meeting will be posted for those who are unable to attend.**  
You can email questions anytime to [GLT@MBTA.com](mailto:GLT@MBTA.com). To learn more about the Green Line Transformation program, please visit [www.mbta.com/GLT](https://www.mbta.com/GLT).

**Accommodations**  
The public meeting is accessible to people with disabilities and those with limited proficiency in English. Live closed captioning in English will be available. Accessibility accommodations and language services will be provided free of charge, upon request, as available. Such services include documents in alternate formats, translated documents, and interpreters. To request a reasonable accommodation and/or language services, please email [GLT@mbta.com](mailto:GLT@mbta.com).





Raise Hand



Q&A

- Use the “**Q&A**” button to submit a typed question or comment
- Press the “**Raise Hand**” button to share your question or comment verbally. Wait for the moderator to recognize and unmute you before speaking.
- If you have joined by phone only, you may “raise your hand” by pressing the star button and then nine (\*9)

*After you speak, we will lower your hand and you will be muted to allow the team to respond and provide opportunities for others to participate*

**Comments may also be sent to [GLT@mbta.com](mailto:GLT@mbta.com)**



*Current conditions near Brigham Circle*