



**Massachusetts Bay
Transportation Authority**

South Attleboro Station Accessibility Improvements

Prerecorded Overview– 100% Design Update

Summer 2022

Nayan Naidoo, MBTA Project Manager

Agenda

1. Project Overview
2. Existing Conditions
3. Proposed Improvements
4. Upcoming Construction
5. Next Steps
6. Public Outreach



Project Overview

This project will provide critical accessibility upgrades, code compliance, and customer experience improvements throughout the station

Project Benefits:

- Fully accessible South Attleboro Station
- Improving signage and path of travel for customers, including a new pedestrian bridge connecting the West Lot to Commuter Rail platform
- Enhancing safety features, including upgrading lighting, fencing, security cameras, communication systems and fire protection

Project awarded to Michael Baker International for station design

- Design Start: Summer 2020
- Design Budget: \$7 million
- Status: 100% Design



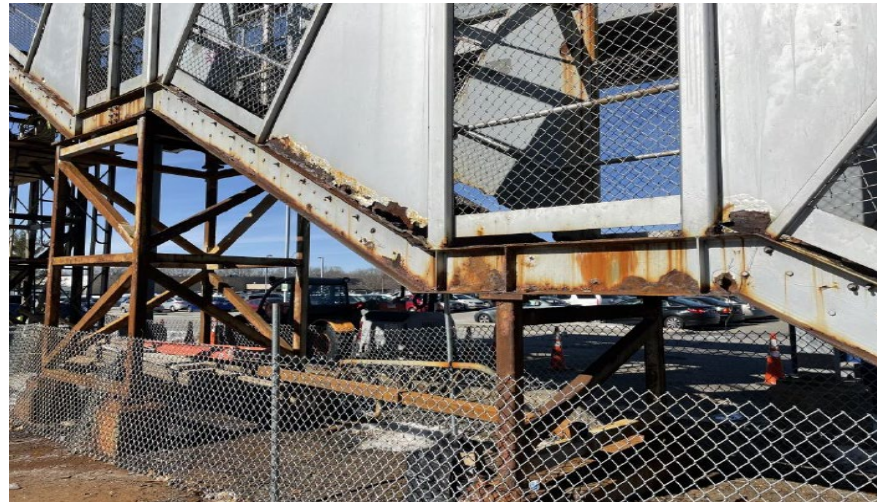
Existing Conditions



Underside of Pedestrian Bridge looking South



East Ramp looking West



West Stairway



West Stairway at top landing



Proposed Improvements: Overview

- Parking Improvements
- 800' High Level Platforms
- New Circulation Elements
 - Pedestrian Bridge
 - 3 Elevators
 - Stairs
 - Ramps
- Vehicle and Bus Drop-Offs
- Site and Roadway Improvements
- Bike Shelters



Proposed Improvements: Architecture

Platform Canopies

- Modular dimensions and structural members improve efficiency of constructability, fabrication
- Drainage of roofs will be away from tracks
- Design allows for full coverage of ramps as well as coverage on the platform
- Views into and out from circulation elements



Upcoming Construction: Demo of Pedestrian Bridge

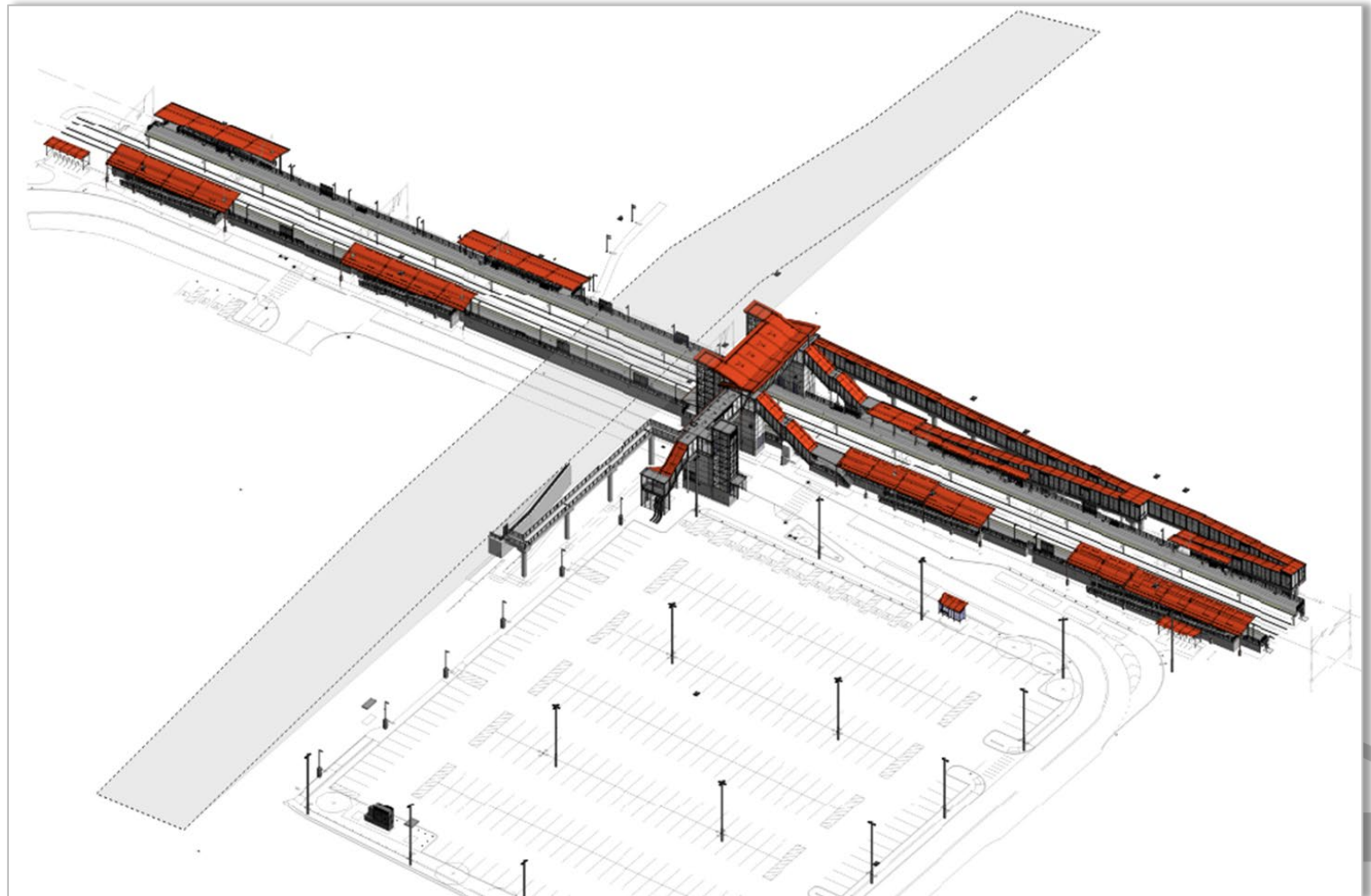


- A separate project to take place ahead of the accessibility improvements project
- Anticipating the pedestrian bridge demolition work to begin this Fall
- Work to take place overnight
- Rail service will not be impacted by this work
- Construction advisories will be distributed by flyer and email ahead of the start of work



Next Steps

- Demolition of Pedestrian Bridge and early action work
- Internal MBTA review of 100% Design
- Acquire Construction Funding for full reconstruction project

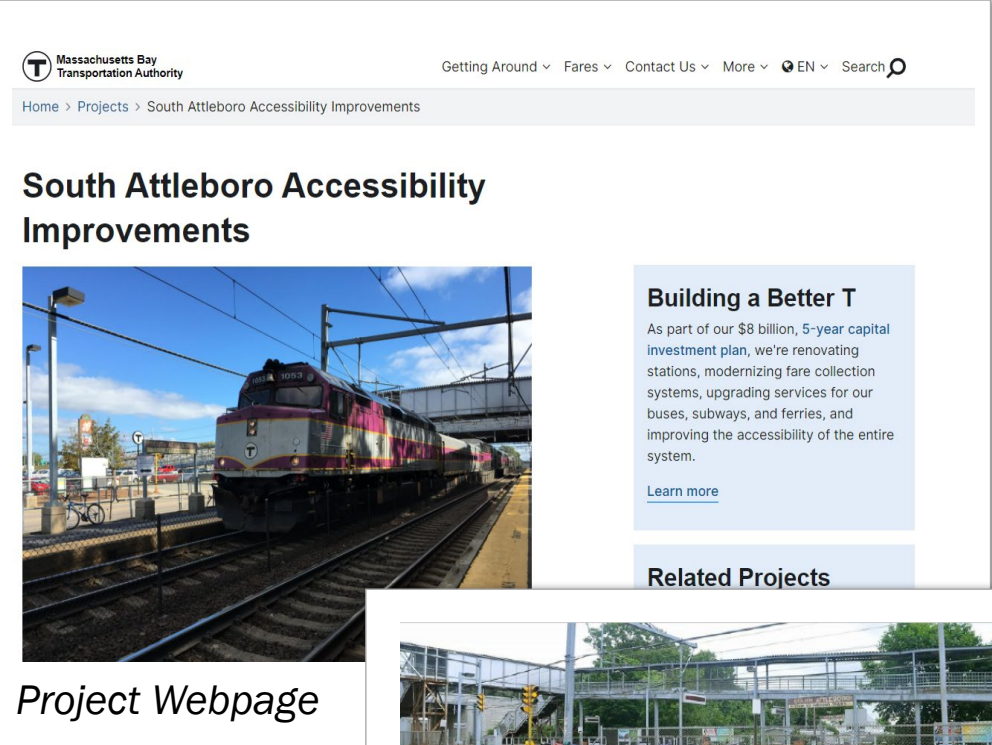


Public Outreach

Visit the project webpage:
mbta.com/SoAttleboroStation

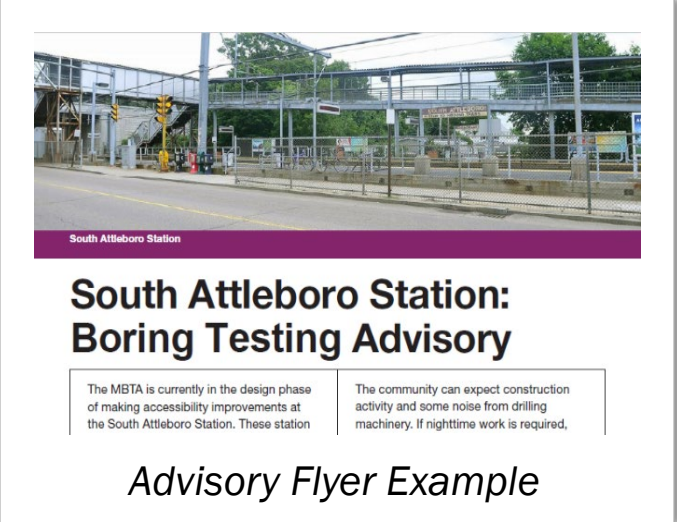
- Public and Stakeholders can sign up to receive digital updates on the project via the project email address
- Construction Advisories will be sent out prior to any significant work scheduled (nighttime, weekend work, etc.)

Project Email: SoAttleboroStation@mbta.com



The screenshot shows the MBTA website header with navigation links: Getting Around, Fares, Contact Us, More, EN, and Search. The breadcrumb trail reads: Home > Projects > South Attleboro Accessibility Improvements. The main heading is "South Attleboro Accessibility Improvements". Below the heading is a photograph of a train at a station. To the right of the photo is a text box titled "Building a Better T" with the following text: "As part of our \$8 billion, 5-year capital investment plan, we're renovating stations, modernizing fare collection systems, upgrading services for our buses, subways, and ferries, and improving the accessibility of the entire system." Below this text is a "Learn more" link. At the bottom of the screenshot, there is a "Related Projects" section.

Project Webpage



The flyer features a photograph of the South Attleboro Station under construction. The title is "South Attleboro Station: Boring Testing Advisory". Below the title are two columns of text: "The MBTA is currently in the design phase of making accessibility improvements at the South Attleboro Station. These station" and "The community can expect construction activity and some noise from drilling machinery. If nighttime work is required,". At the bottom of the flyer is the text "Advisory Flyer Example".

Advisory Flyer Example

THANK YOU!

