

# Orange Line 30-Day Surge

## Week 4 Progress Update

### Service Resumes Monday

Prepared by Capital Transformation (CT)

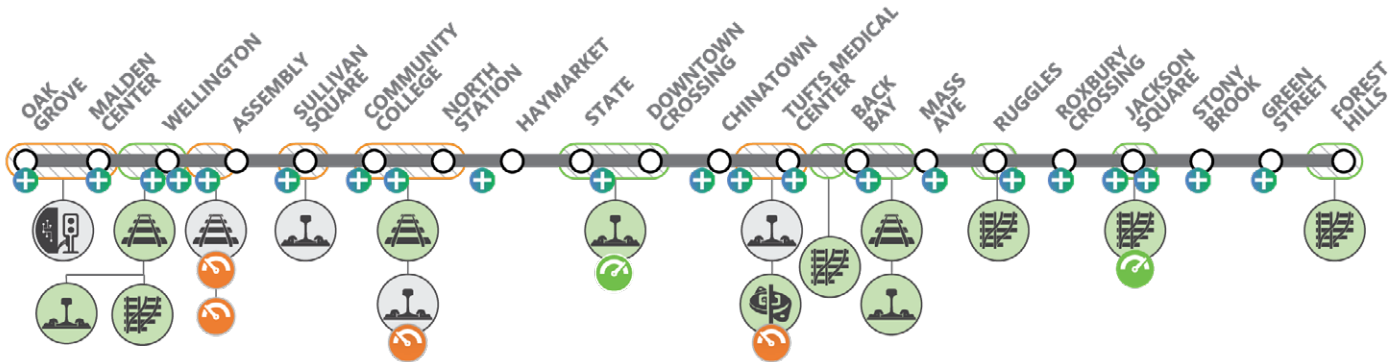
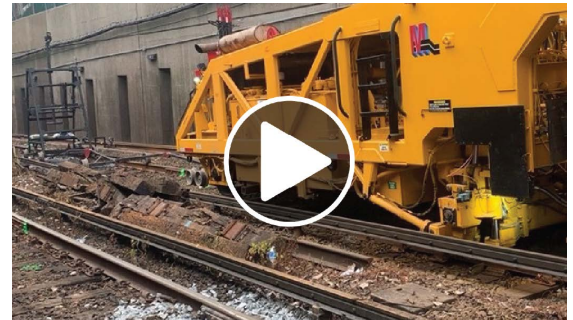


**On-Schedule | Service Resumes in Three Days**



### After Week 4, we are on schedule to welcome riders back Monday morning

We have **completed the fourth week** of the Orange Line Surge, a collaborative effort that focuses on important safety, service, and reliability upgrades across the entire line. These upgrades, as well as their on-time completion, wouldn't be possible without the exemplary efforts by all teams working diligently to drive progress. This weekend, crews are taking the final steps to complete final checklists



**Trackwork: New Rail, Ballast & Ties**

**New Rail Replacement**

**Special Trackwork: Turnout Renewal\***

**Cologne Egg Rail Fasteners**

**Signal System Upgrades**

**Work Activity to Address Slow Zone**

**Eliminated Slow Zone**

**Amplifying Results**

#### Did you know?

After new track and ballast installation, slow zones need to temporarily remain in place due to the track being area disturbed during construction. In the case of the Orange Line, slow zones will remain for about a week after trains resume. This is because it takes time for the new track and ballast to "settle" as trains repeatedly run over these areas

\*Schedule subject to change with weather conditions and in accordance with public health directives  
Project percentages represent the value of the installed work

14,000 Linear Feet of Rail Replacement



88% Completed

20 Units of Special Track Renewal\*



100% Completed

Removal of 6 Slow Zones



2 of 6 Completed

3,500 Feet of Track Replacement



100% Completed

\*Includes both total replacement and partial component replacement



Trackwork Near North Station



Railwork Dana Bridge



Railwork North Station

- At Wellington, final power connections were made to the third rail, new signal masts were installed and wired, and the signal system was tested. Final finishing work was completed including setting up lighting, restoring fences, replacing guard rail, leveling ballast, and paving. Test trains operated over the newly installed track and special trackwork as a final verification prior to return to service. Work that addressed the additional slow zones advanced at Dana Bridge near Assembly and Tufts. Crews also completed rail and tie replacement near Back Bay. Final signals work advanced at Oak Grove and Malden Center
- Crews were completing work at Dana Bridge and through Assembly, Sullivan, and Community College. Crews replaced over 2,000 ties and continued toward the North Station portal



Signal Upgrades Oak Grove



Signal Upgrades Malden Station

Signal Upgrades Oak Grove & Malden



96% Completed

- At Oak Grove and Malden, final signal testing is nearly complete, including operating test trains on the new signal system. These trains also operated through the interface between the new system at Malden and the existing system at Wellington
- Cologne egg hardware installations and removals were completed at Tufts Curve, and crews made rail replacements



Rail Fasteners Tufts Curve

Replacing Cologne Egg Rail Fasteners



100% Completed

- **Lookahead** | Crews will complete final testing of the signal systems upgrades at Oak Grove and Malden along with final work zone inspections. Once these are complete, a series of test trains will be operated in preparation for return to service Monday



### New Orange Line Trains Readiness

During the Surge, the initial goal was to prep 60 new Orange Line cars for when service is restored Monday morning. This week, mechanics and engineers completed vehicle readiness of additional 12 cars, enough to cover peak morning and afternoon service, with two spare trains (six cars make up a train). Following the Surge, riders will experience better service on an Orange Line fleet that is predominately new cars



60 ~~70~~  
Cars Ready



## + Amplifying Results

We're leveraging work windows that do not impede the priority work to achieve other planned repairs and upgrades. Learn more about how we amplified results in progress updates from [Week 1](#), [Week 2](#) and [Week 3](#). This week, the following efforts were completed:

### Enhancing Safety and State of Good Repair



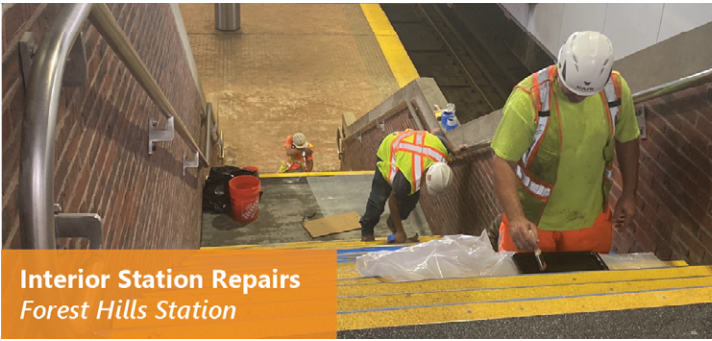
Standpipe Replacement  
Tufts



Test Pits and Borings  
Near Dana Bridge

- ✔ **Tufts Standpipe Replacement:** Removal and replacement of the existing standpipe fire suppression system at Tufts station to a new state-of-the-art system that covers all areas of the station
- ✔ **Orange Line Test Pits and Borings:** Crews excavated exploratory test pits to expose signal/power infrastructure and underground utilities in preparation for soil borings to support a future project. The borings were completed on schedule and will provide critical soil data for the design of a new underground transmission line
- ✔ **Drainage Cleaning:** Crews vacuumed out dozens of catch basins and over 1,000 feet of drainage troughs and pipes. Periodic cleaning of catch basins and drainage troughs is crucial to managing storm water during large storms and ensuring the trains aren't impacted by flooding conditions

## Improving Rider Experience



Interior Station Repairs  
Forest Hills Station

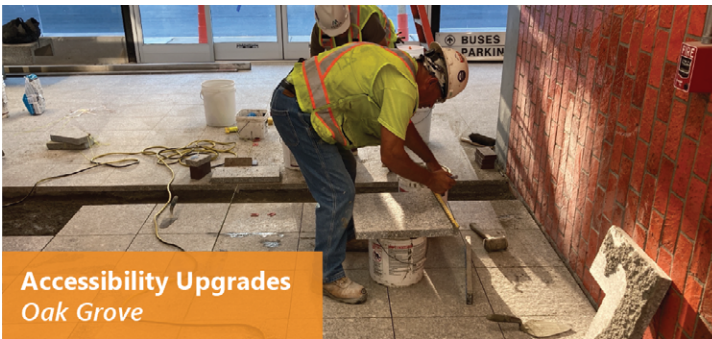


Roof Repairs  
Wellington Station

✓ **Interior/Exterior Station Repairs:** Repairs at stations across the Orange Line included replacement of platform tactile strips, concrete repairs to platforms, brick paver replacements, station lighting repairs and replacement, bench repairs, signage replacement, stair tread replacement, painting of various station elements and overall general station cleaning

✓ **Wellington Roof Repairs:** Replacement of the existing roof at the Wellington Facility, with roof drainage, all flashing, and roof accessories

## Improving Accessibility



Accessibility Upgrades  
Oak Grove



Tactile Replacement  
Ruggles Station

✓ **Oak Grove Accessibility Upgrades:** Upgrades including skylight installation, elevator work, and installation of new station floors, to eliminate trip hazards and provide a better walking surface for passengers entering and exiting the station. Stair treads were replaced at once entrance, and floors in the station lobby were ground and polished. New lights were installed on the platform and other cosmetic improvements and cleaning was done throughout the station

✓ **Tactile Replacement:** Repair and replacement of tactile strips, which help guide the visually impaired platforms, at stations between Ruggles and Forest Hills

## Increasing Rider Capacity



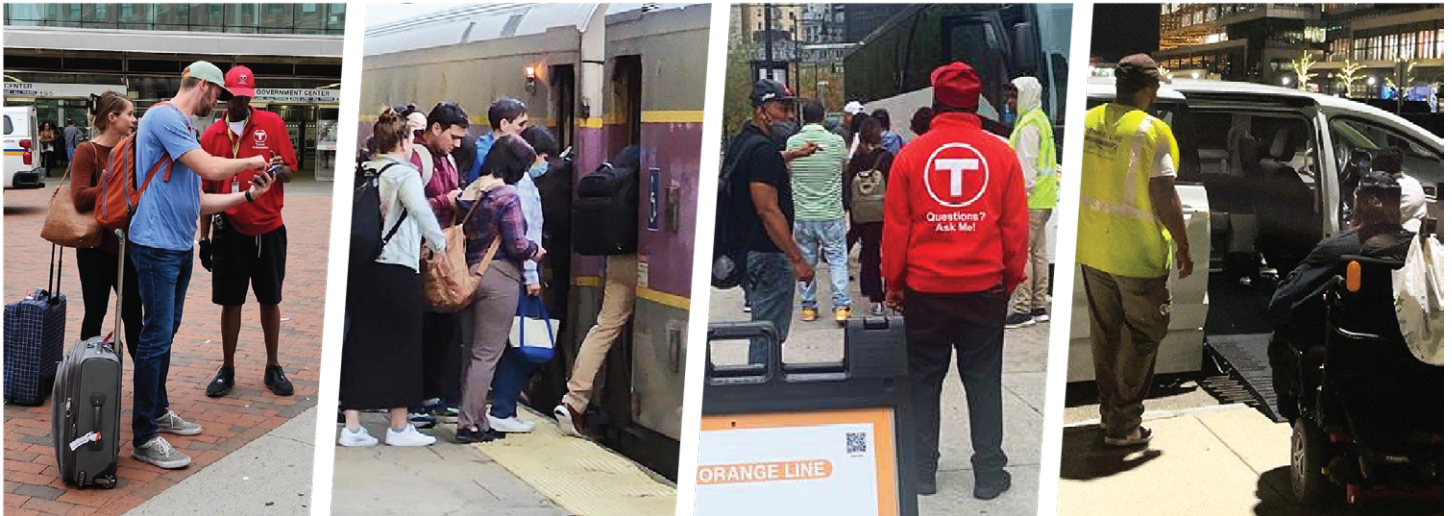
Southwest Corridor Signals  
Ruggles



Southwest Corridor Signals  
Ruggles

✓ **Southwest Corridor Signals:** Workers have laid 45,000 feet of new signal cable, which will be activated in 2023 as part the [Signal Upgrades project](#) when the new system is placed in service along the Southwest Corridor

## Rider Experience



**Over the past four weeks, we've listened to our riders,** learned from their experiences, and made necessary wayfinding and service adjustments. We will continue to solicit your feedback and will do our best in responding to Orange Line riders' needs. Alternative service options remain in place for the last two days of the Surge including free, accessible shuttle bus service, enhanced Commuter Rail service, and additional Silver Line service

As we head into the final weekend of the Surge, these tools are still available to help get riders where they need to go:

- **Check out** [mbta.com/bbt2022](https://www.mbta.com/bbt2022) for information on how to navigate service diversions
- **For more information,** connect with the T on Twitter [@MBTA](https://twitter.com/MBTA), #TAccess, #RideSafer, #BuildingABetterT, Facebook [/TheMBTA](https://www.facebook.com/TheMBTA), or Instagram [@theMBTA](https://www.instagram.com/theMBTA). You can also submit questions and comments to [OLT@mbta.com](mailto:OLT@mbta.com)

**Sign up for T-Alerts and check out our project updates online**

**Green Line  
Transformation**

**Orange Line  
Transformation**

**Red Line  
Transformation**