

Orange Line 30-Day Surge

Service Resumed - September 19, 2022



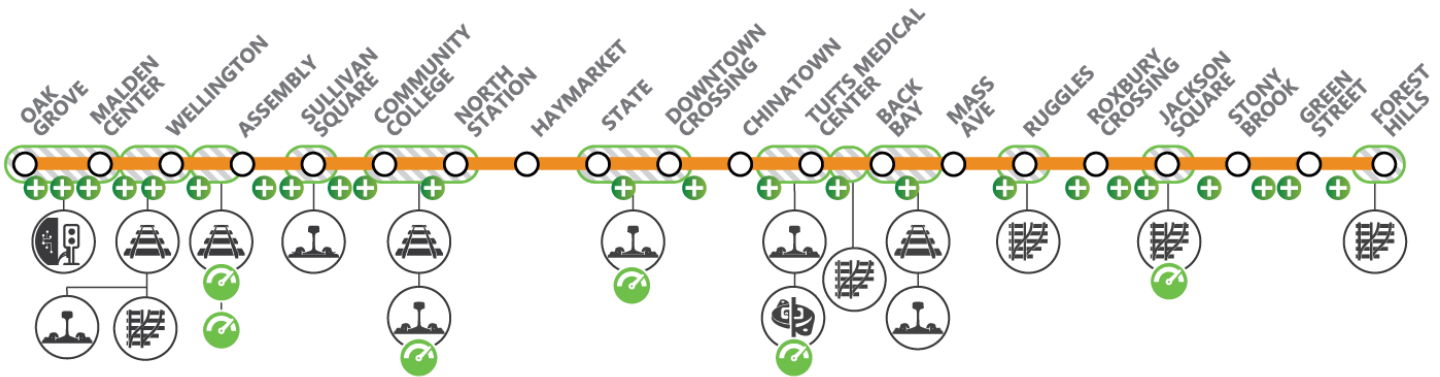
Prepared by Capital Transformation (CT)



Completed on Schedule



As we continue taking steps toward elevating the Orange Line into a service that our riders can be proud of, I'm regularly reminded that this work isn't possible without the support of so many stakeholders in our communities. And to them, all I can say is thank you for your sacrifice, thank you for your feedback, and thank you for putting your trust in us.



Did you know...

... Slow zones across the Orange Line will stay in effect for about one week. That's because new track and ballast needs to settle under the weight and movement of trains, and keeping the slow zones in place allows track engineers to monitor the new infrastructure and verify when it is ready for full-speed operation



*Schedule subject to change with weather conditions and in accordance with public health directives
Project percentages represent the value of the installed work



Slow Zone Removal



6 of 6
Addressed

14,000 Linear Feet of Rail Replaced



100%
Completed



3,500 Feet of Track Replaced



100%
Completed



20 Units of Special Trackwork Renewed*



100%
Completed

**Includes both total replacement and partial component replacement*



Signal System Upgrades Oak Grove & Malden



100%
Completed



48,000 Linear Feet of Signal Cable Placed



100%
Completed



New Orange Line Train Readiness



72 Cars
Available for Revenue Service



**Schedule subject to change with weather conditions and in accordance with public health directives
Project percentages represent the value of the installed work*

+ 27 Additional projects were advanced during the Orange Line Surge

20

**Opportunities Advancing
State of Good Repair**



3

**Opportunities Enhancing
Accessibility**



4

**Opportunities Improving
Rider Experience**



Shield Safety and State of Good Repair



Systemwide
Southwest Corridor Signals

Placement of 48,000 feet of cable supports implementation of new digital signal system



Jackson Square
Expansion Joint Inspection

Identification of leaks to help prevent future water incursion into tunnel



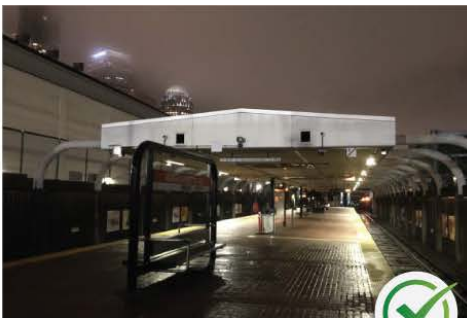
Systemwide
Drainage Cleaning

Vacuuming of drainage troughs will help prevent tracks from flooding during storms



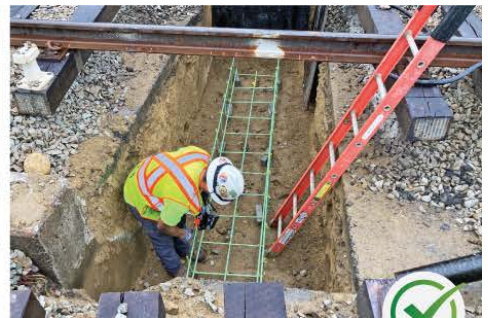
Tufts Station
Standpipe Replacement

Replacement of fire suppression system within station



Massachusetts Ave
Blackout Test

Testing of station generators and identification of additional emergency lighting needs



Wellington Station
Power Vault

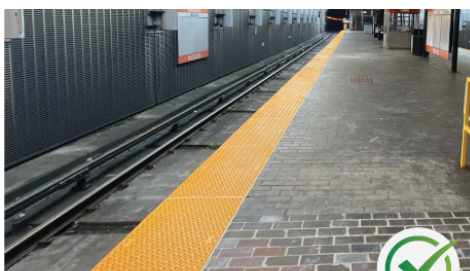
New infrastructure so third rail power will be delivered more reliably

Enhancing Accessibility



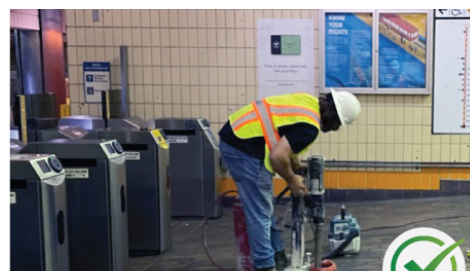
Oak Grove Station *Accessibility Upgrades*

Advanced accessibility improvements, including elevator work and installation of new station floors



Ruggles Station *Tactile Replacement*

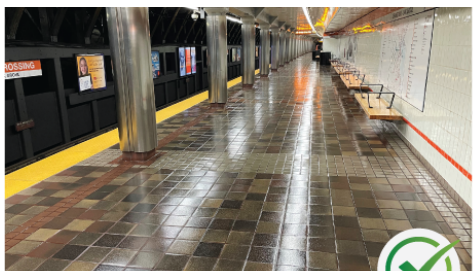
Repaired and replaced tactile strips to assist the visually impaired on platforms



State Street Station *Lobby Core Sample*

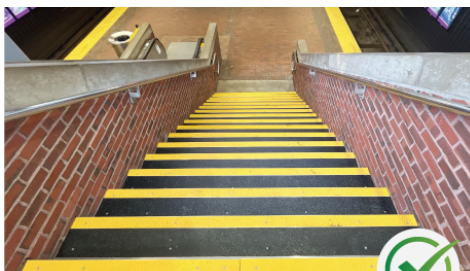
Took core samples to provide a better understanding of what will be required to implement planned station accessibility improvements

Improving the Rider Experience



Downtown Crossing Station *Station Improvements*

Station improvements included lighting, bench, and flooring upgrades



Forest Hills Station *Stairway Improvements*

Refurbished stair treads to Forest Hills platform



Massachusetts Ave Station *Interior & Exterior Station Repairs*

Replaced wayfinding signage to better guide riders

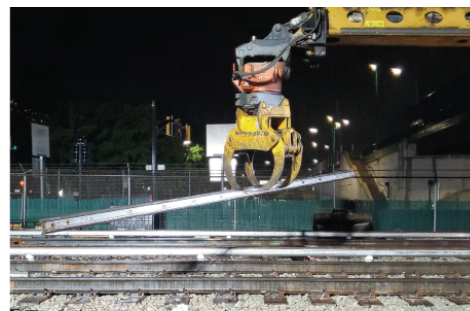
More Orange Line Improvements Underway



Full Right of Way Modernization *on Southwest Corridor*



New Signal System *Across Orange Line*



Maintenance of Way Construction *to Achieve a State of Good Repair*