

Orange Line Transformation

Construction Project Updates



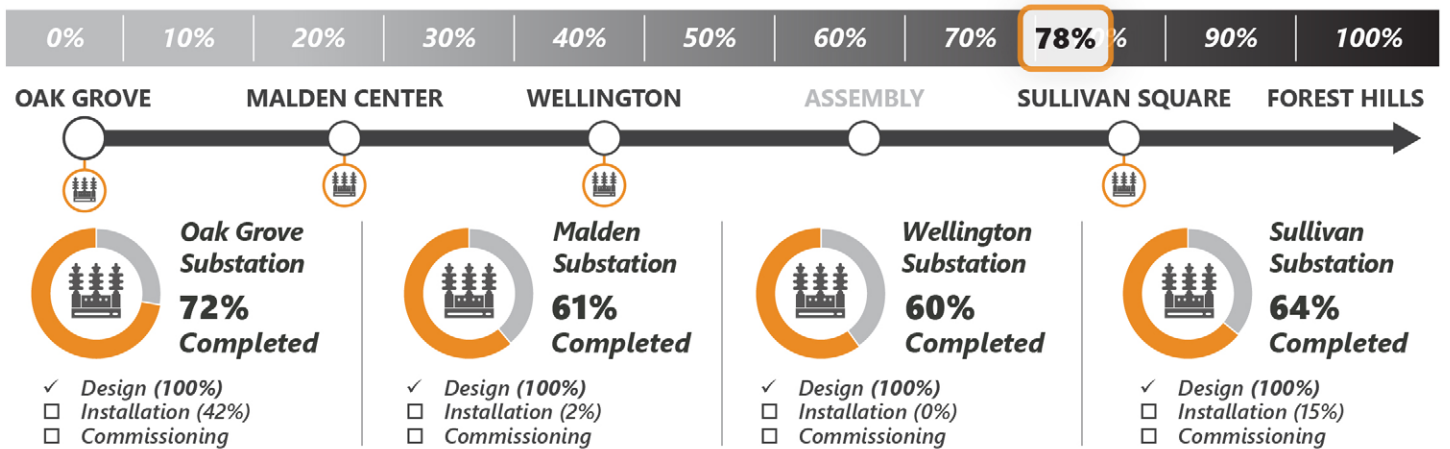
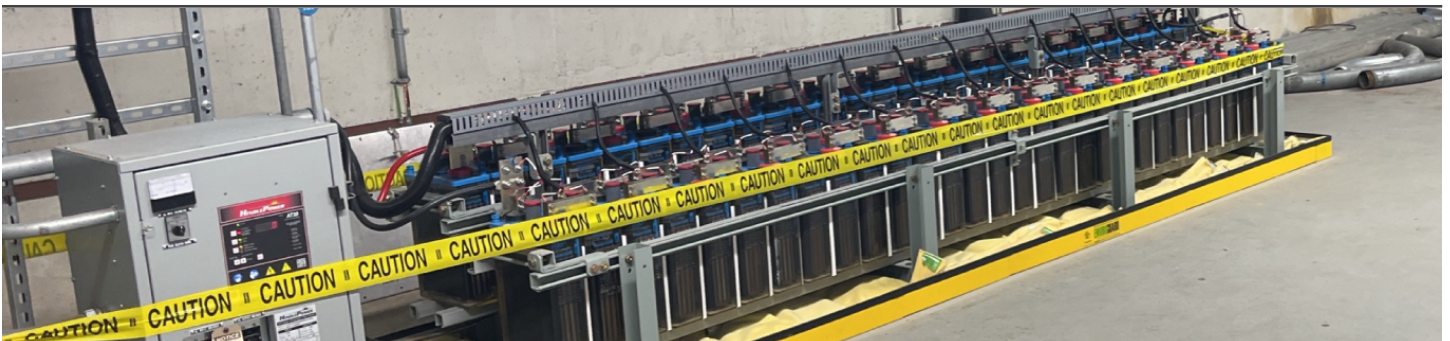
Week in Review and Lookahead

Friday, September 23, 2022

The MBTA successfully [completed the Orange Line surge](#) and service resumed this Monday, September 19. Crews were able to **complete more than five years' worth of night and weekend construction on projects across the line.** Thank you again to all of our riders for their patience as we made these important upgrades to the system.



Traction Power Substations

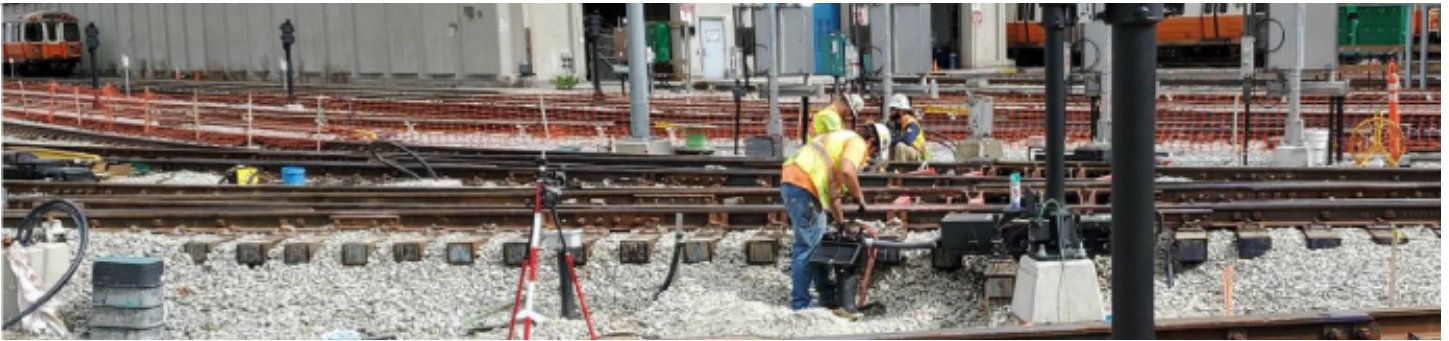


Traction Power Substations: Modernize the third rail power supply to reduce the risk of service disruptions; develop a power system capable of supporting additional Orange Line service

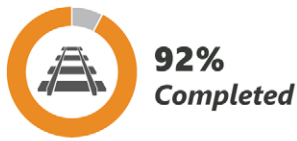
- ✓ **This Week** | At Oak Grove crews are preparing the existing floor for installation of the new epoxy flooring system
- **Lookahead** | Crews look ahead to installing new electrical equipment in the Oak Grove substation. At Sullivan crews will be installing a new power feed to the mobile traction power substations

*Schedule subject to change with weather conditions and in accordance with public health directives
Project percentages represent the value of the installed work

Wellington Yard and Maintenance Facility Updates



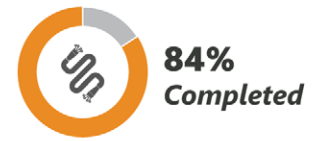
21,895 Feet of Track



69 Units of Special Track

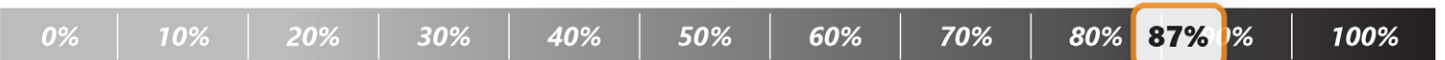


Traction Power & Signals



Wellington Yard: Upgrade Wellington Yard to increase service capacity, replace outdated infrastructure, and enhance safety.

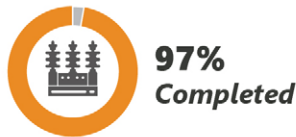
- ✓ **This Week** | Crews continued with new track and signals installation in the south yard of Wellington
- **Lookahead** | Crews will be replacing additional yard tracks in the south yard



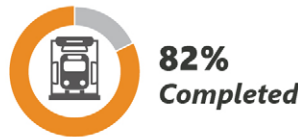
Building Upgrade



Power Substation



Train Wash



Maintenance Bays



Wellington Maintenance Facility: Modernize the Vehicle Maintenance Facility to improve vehicle maintenance; reducing customer wait times, provide cleaner cars, and deliver safer operations.

- ✓ **This Week** | Crews continued installation of the overhead catwalk system and new electrical lighting and fire alarm systems
- **Lookahead** | Replacement of tracks in the facility

*Schedule subject to change with weather conditions and in accordance with public health directives
Project percentages represent the value of the installed work