

Station Upgrades

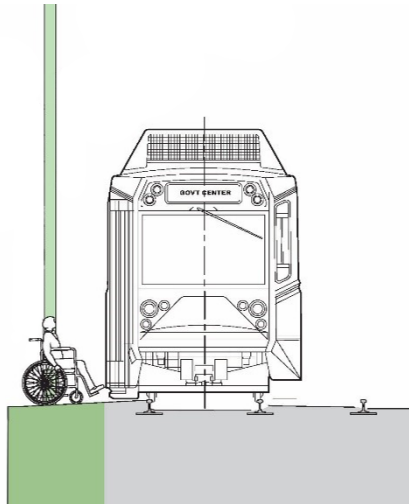
A future MBTA project will complete accessibility upgrades at Beaconsfield, Chestnut Hill, Eliot, and Waban including:

- ✓ Raise platforms for accessible boarding with future Type 10 trains
- ✓ Reconstruct pedestrian track crossing at each platform end
- ✓ Create accessible pedestrian entrances from adjacent streets
- ✓ Reconfigure parking lot and create van-accessible spots at station entry point
- ✓ Add platform amenities including improved lighting



Planned Platform Upgrades

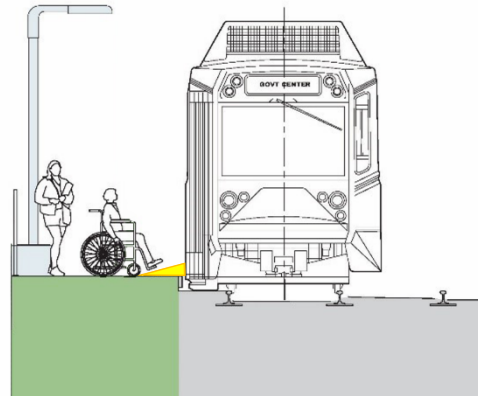
Existing Conditions



- Platform at top of rail
- Too low to deploy bridge plate
- Uneven asphalt platforms

8-inch Above Top of Rail Platform

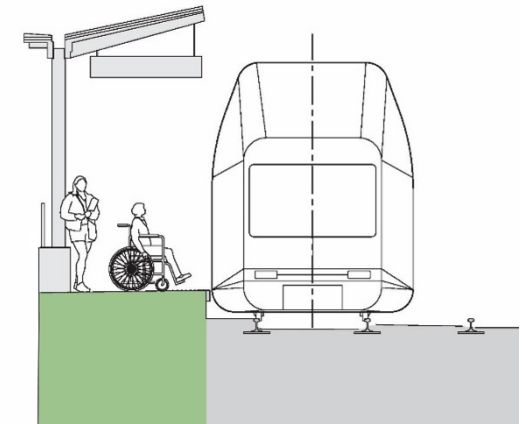
- 8 inches above top of rail
- 140 feet long (minimum)



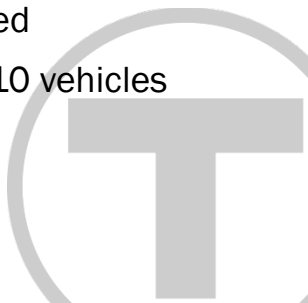
- Platform raised to 8" to allow for bridge plate deployment
- Lighting, benches, and amenities improved

Future 14-inch Above Top of Rail Platform

- Level with train floor
- 225 feet long



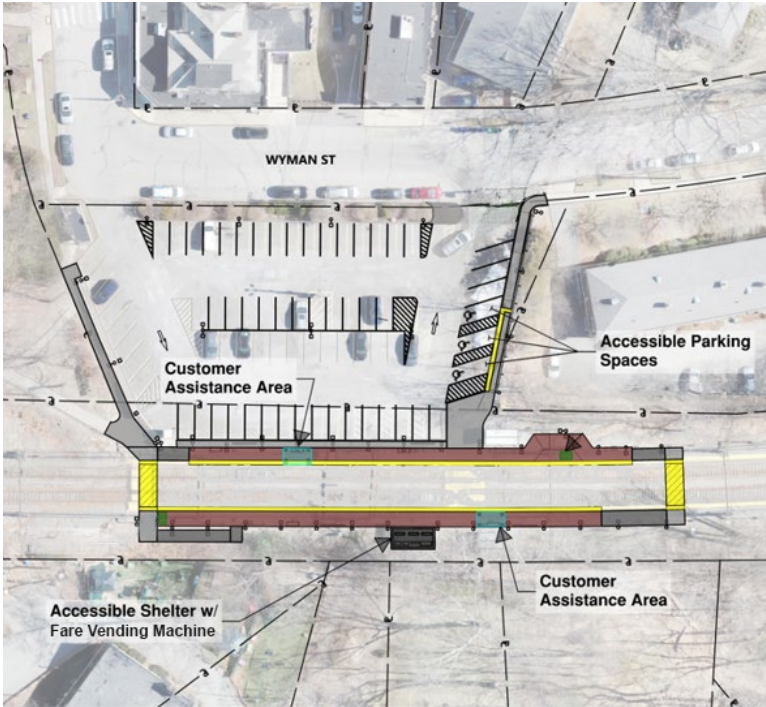
- Provides roll-on, roll-off boarding
- Raised after legacy cars retired
- Accommodates double Type 10 vehicles



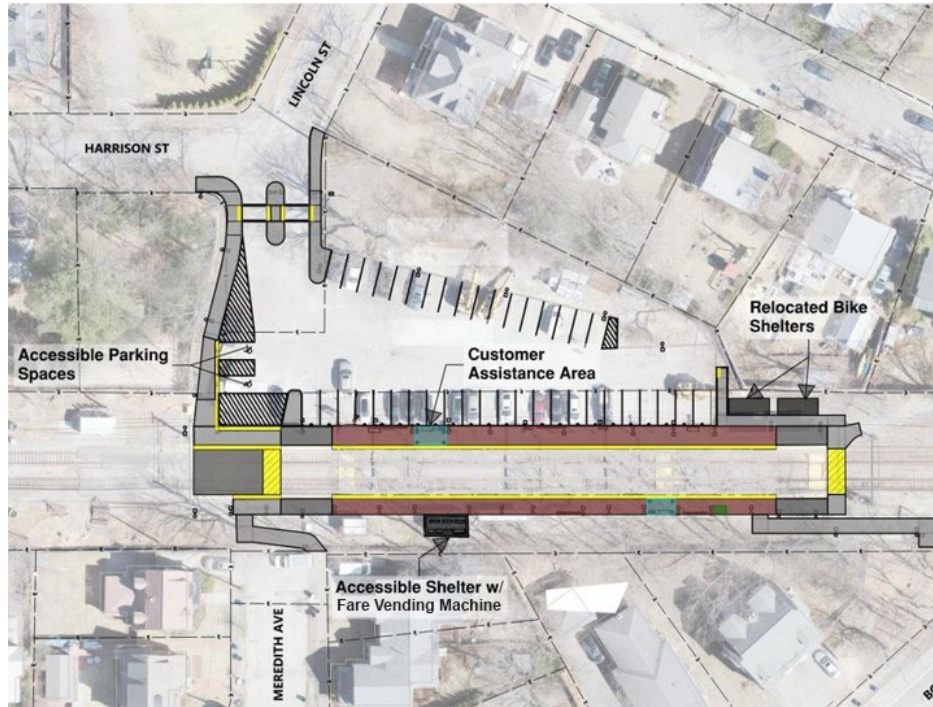
Beaconsfield Station Accessibility Upgrades



Waban, Eliot, and Chestnut Hill Accessibility Upgrades



Waban



Eliot



Chestnut Hill



Newton Highlands Station Accessibility Upgrades

An upcoming MBTA project will complete accessibility upgrades at Newton Highlands Station

- ✓ ADA/MAAB compliant ramps and access paths from Walnut St, Hyde St, and Station Ave
- ✓ Raise platforms for accessible boarding with future Type 10 trains
- ✓ Accessible pedestrian crossing connecting inbound and outbound platforms
- ✓ New shelters in the inbound platform
- ✓ New benches, bicycle shelters, and signage
- ✓ New lighting, communication, and security equipment



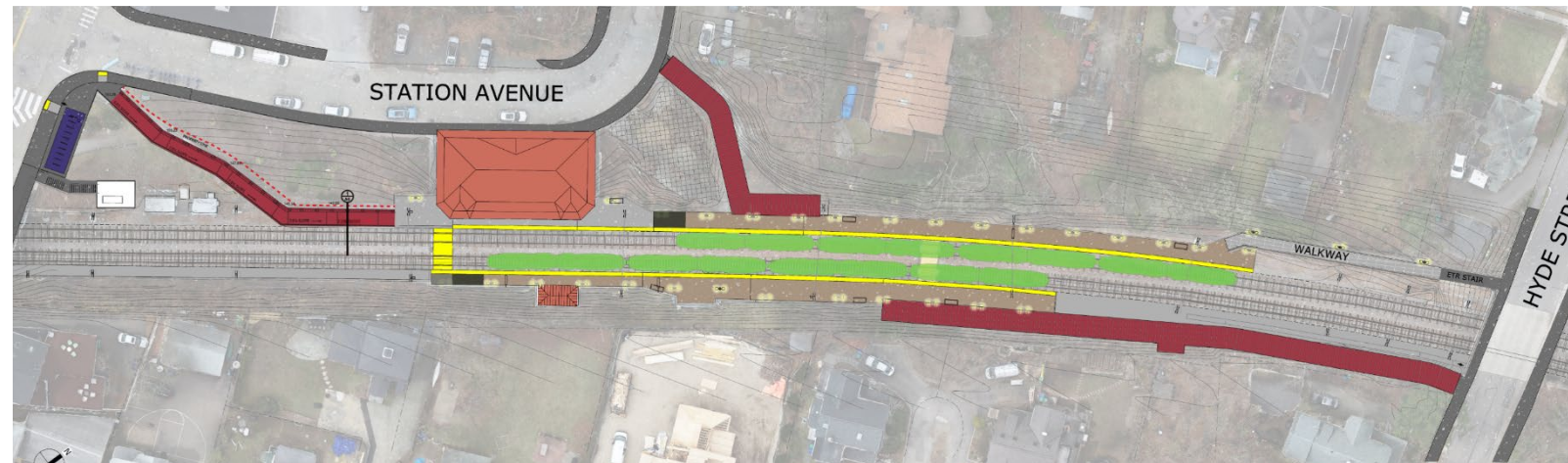
Walnut St Ramp



Station Ave Ramp



Hyde St Ramp



Station Upgrade Plan