

OAK GROVE STATION ACCESSIBILITY IMPROVEMENTS



Public Meeting August 9, 2018



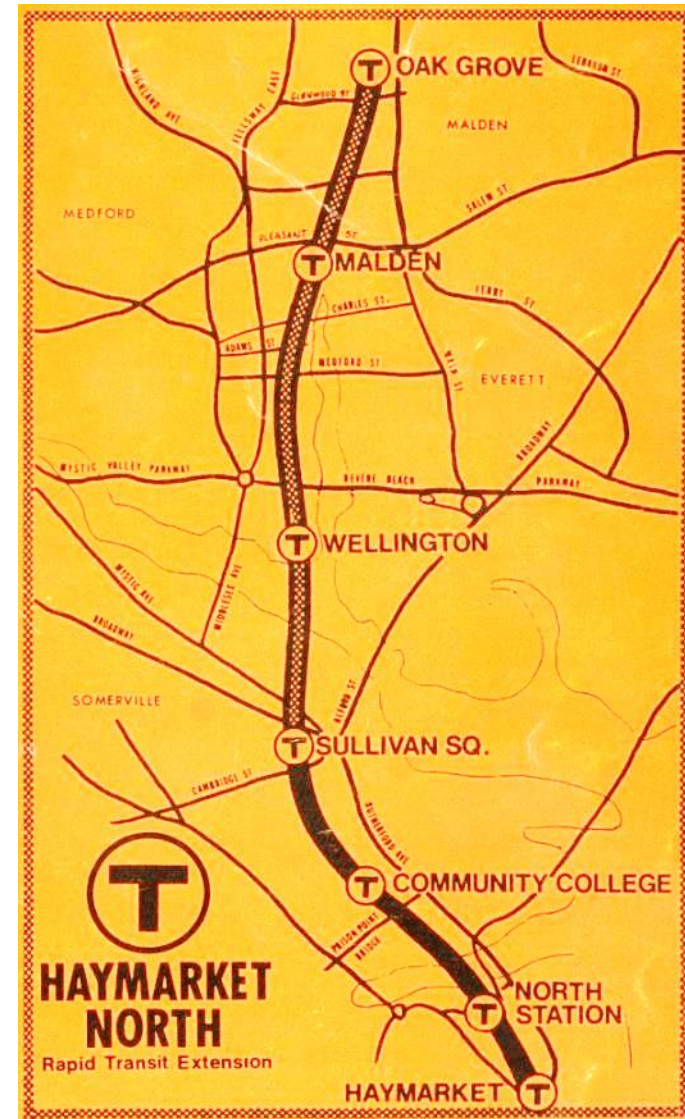
**Massachusetts Bay
Transportation Authority**

Agenda

- Introduction
- Station History
- Project Scope
- Project Benefits
- Existing Conditions
- Proposed Elevators
- Construction Staging
- Project Schedule
- Other Improvements
- Public Outreach

Station History

- **1975:** Orange Line is extended 3 stops beyond Sullivan Square:
 - Wellington
 - Malden
 - Oak Grove
- **1977:** Oak Grove station is built at a time when stations are typically constructed with exposed concrete and angular architectural style



Station History (continued)

- **2013:** Renovation of the Orange Line platform that included replacement of detectable warning strips, new concrete topping, and a new emergency exit.
- **2016:** Oak Grove Station Accessibility Improvements design started



Project Scope

- Replace two existing elevators
- Install two additional elevators to provide redundancy
- Improve elevator visibility by use of glass enclosures
- Improve station access and repair sidewalks
- Implement station brightening (cleaning, painting, lighting)
- Improve wayfinding and directional signage
- Upgrade station compliance with current codes

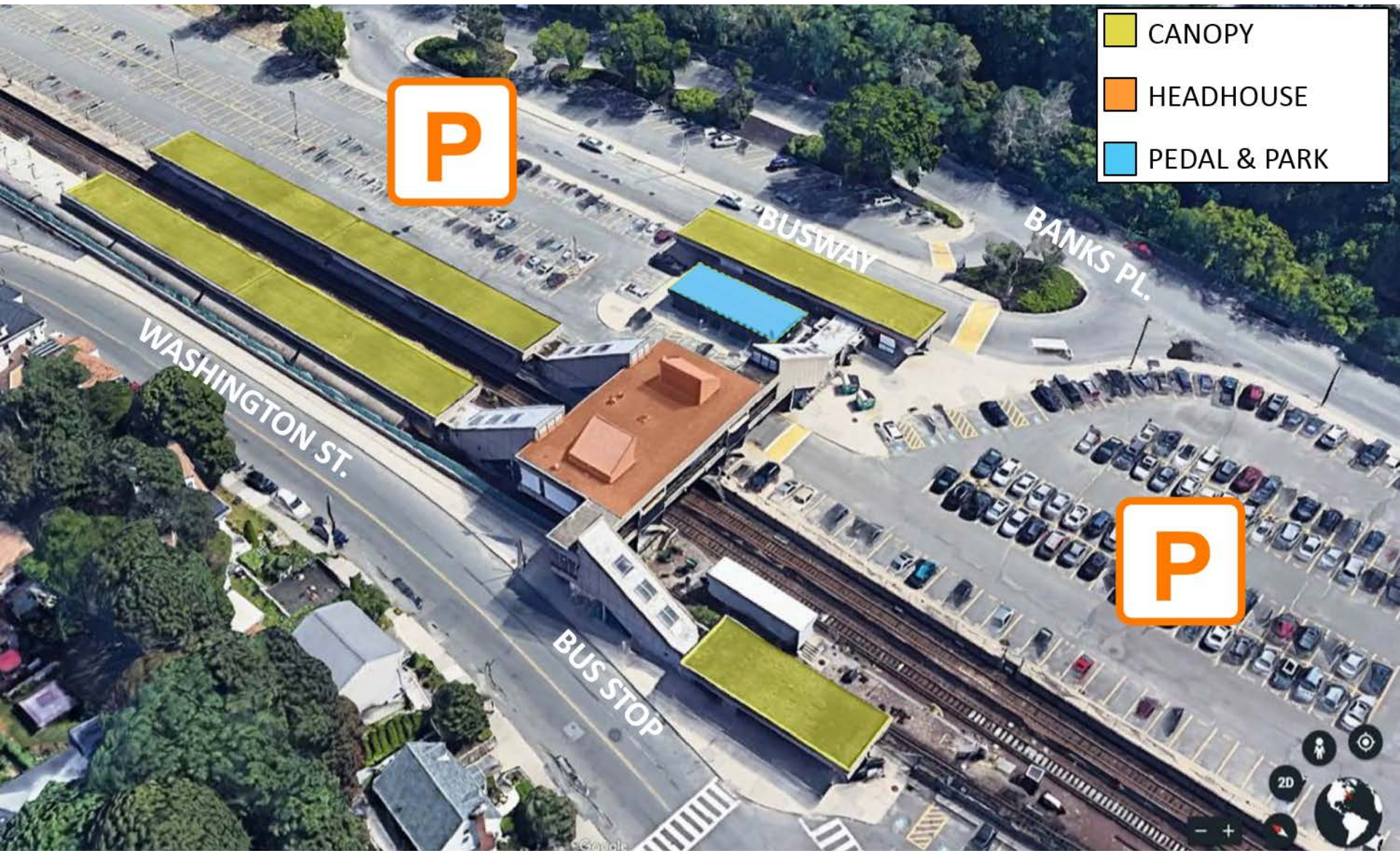


Project Benefits

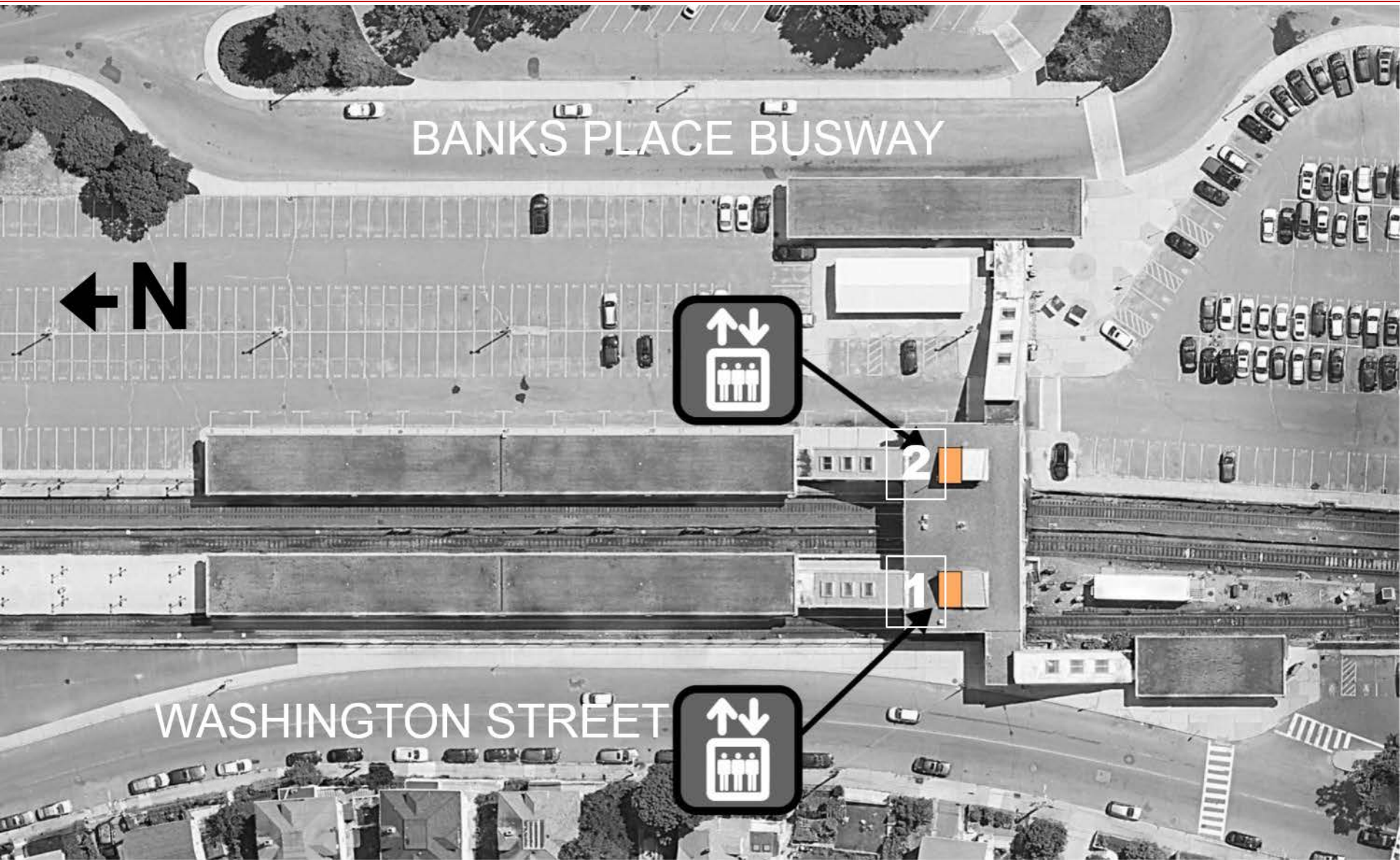
- Improved station accessibility
 - Elevator reliability
 - Pedestrian circulation and wayfinding
- Improved safety, reliability and customer experience
- Increase energy efficiency
- Reduced maintenance costs
- Code compliant station



Existing Conditions



Existing elevators to be replaced



Installation of new elevators



Washington Street Station View - BEFORE



Washington Street Station View - AFTER



Parking Lot Station View - BEFORE



Parking Lot Station View - AFTER



Construction Staging

- Maintain Orange Line, Bus and Commuter Rail Operations
- Work That has the potential to foul tracks will be performed during non-revenue hours
- Parking / roadway improvements during off-peak hours
- Construction Sequence:
 - Construct new elevators 3 & 4
 - Reconstruct existing elevators 1 & 2 - shuttle from east parking lot to Washington Street entrance



Construction Staging – PHASE 1

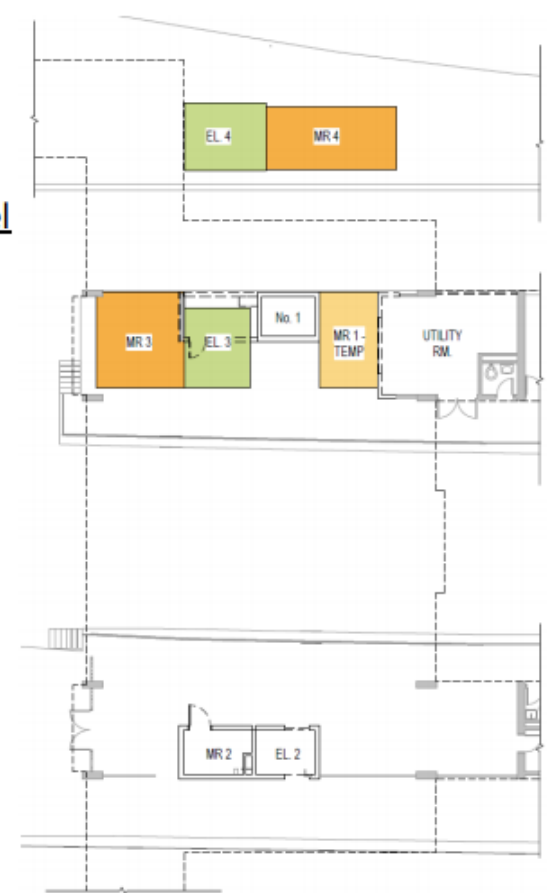
Phase 1 – Lobby Level

- Build New AFC
- Demo Existing AFC
- Build New EL 3, EL 4, & Machine Rooms



Phase 1 – Platform Level

- Build Temporary Machine Rm. 1
- Demo Existing MR 1
- Build New EL 3, EL 4, & Machine Rooms



Construction Staging – PHASE 2

Phase 2 – Lobby Level

- Accessible Shuttle from East Entry to EL 4
- Demo Existing EL 1 & EL 2
- Build New EL 1 & EL 2

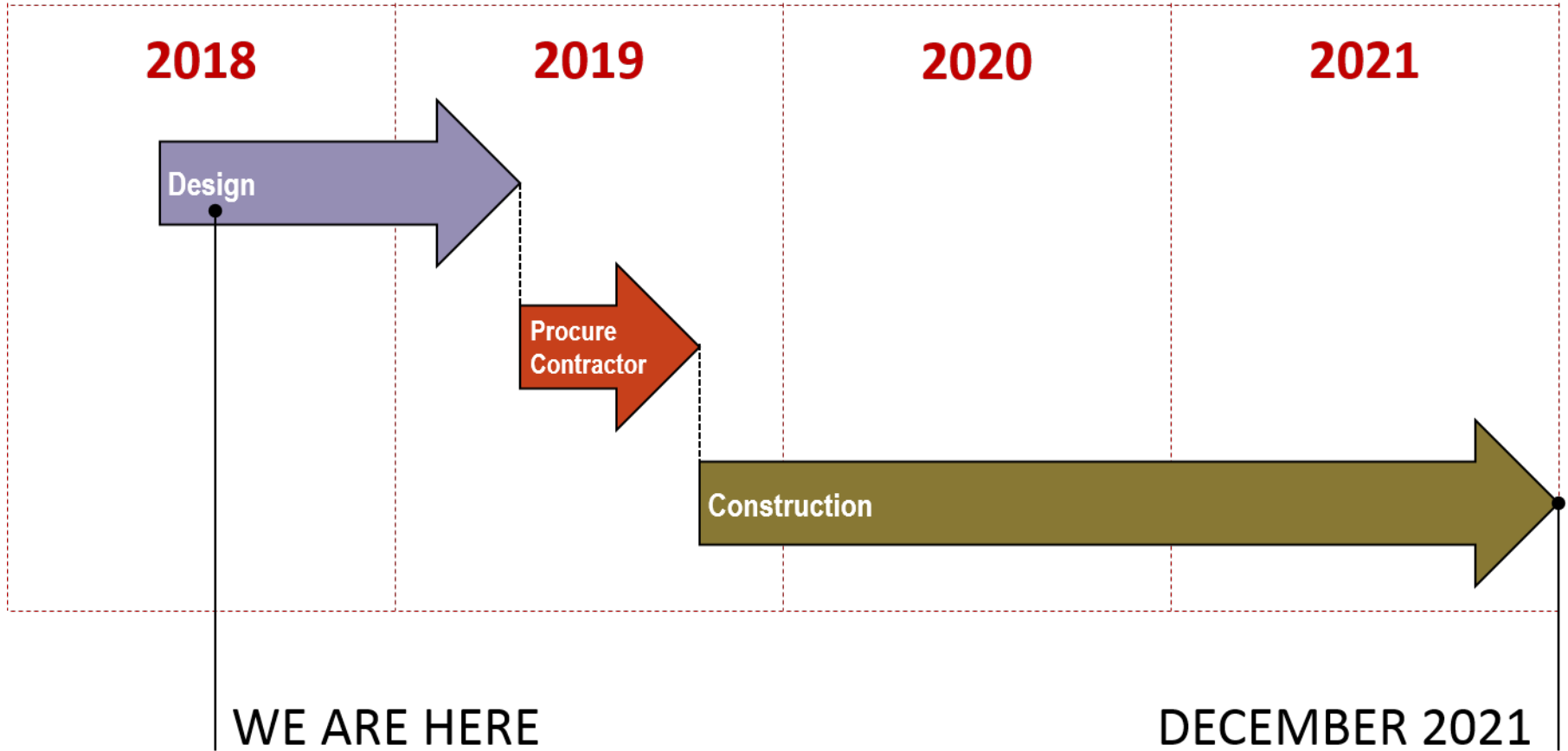


Phase 2 – Platform Level

- Accessible Shuttle from East Entry to EL 4
- Demo Existing EL 1, EL 2, & Machine Rooms
- Build New EL 1, EL 2, & Machine Rooms



Project Schedule



Other Improvements



- Along Washington Street
- Along Banks Place
- At the two Parking Lots



Public Outreach

- MBTA Project Website:

www.mbta.com/oakgroveimprovements

- Project updates will be posted regularly on website

- MBTA Project Email:

oakgroveimprovements@MBTA.com





QUESTIONS & COMMENTS



**Massachusetts Bay
Transportation Authority**